

# Оглавление

## Серия 1477/1478

14771 .....	12
14781 .....	13
настольные лампы .....	18
торшеры.....	19

## Серия 1920

19201 .....	20
настольные лампы .....	23

## Серия 1905

19051 .....	24
бра .....	30
настольные лампы .....	31
торшеры.....	32

## Серия 1911

19111 .....	34
бра .....	40
настольные лампы .....	41
торшеры.....	41

## Серия 1915

19151 .....	42
-------------	----

## Серия 1901

19011 .....	44
бра .....	48
настольные лампы .....	49
торшеры.....	49

## Серия 1927

19271 .....	50
бра .....	56
настольные лампы .....	57
торшеры.....	57

## Серия 1928

19281 .....	58
бра .....	64
настольные лампы .....	65
торшеры.....	65

## Серия 1932

19321 .....	66
бра .....	72

## Серия 1910

19101 .....	74
бра .....	80
торшеры.....	81

## Серия 1909

19091 .....	82
бра .....	88
торшеры.....	89

## Серия 1903

19031 .....	90
-------------	----

## Серия 1904

19041 .....	92
бра .....	94
торшеры.....	95

## Серия 7706/7731

77061 .....	96
77311 .....	97

## Серия 7707

77071 .....	98
бра .....	102

## Серия 7708

77081 .....	100
бра .....	102

## Серия 7718

77181 .....	104
-------------	-----

## Серия 83хх

торшеры.....	106
бра .....	107

Серии  
В ПОТОЛОЧНЫХ СВЕТИЛЬНИКАХ:



Серия 19051, стр. 24



Серия 19151, стр. 42



Серия 19101, стр. 74



Серия 19091, стр. 82



Серия 19111, стр. 34



Серия 19011, стр. 44



Серия 19031, стр. 90



Серия 19041, стр. 92



Серия 19271, стр. 50



Серия 19281, стр. 58



Серия 77061, стр. 96



Серия 77311, стр. 97



Серия 77071, стр. 98



Серия 19321, стр. 66



Серия 77081, стр. 100



Серия 77181, стр. 104



Серии  
в ПОТОЛОЧНЫХ СВЕТИЛЬНИКАХ:



Серия 19201  
стр. 20

Серия 1477 / 1478



Серия 14771  
стр. 12



Лампы  
стр. 18



Торшеры  
стр. 19



Лампы  
стр. 18



Серия 14781  
стр. 13

Подвесные светильники  
(подвесы)

Диаметр светильника (серии 1477, 1478)



Ø 15cm  
Ø 22cm  
Ø 25cm  
Ø 30cm  
Ø 35cm  
Ø 40cm  
Ø 53cm



Ø 15cm  
Ø 22cm  
Ø 25cm  
Ø 30cm  
Ø 35cm  
Ø 40cm  
Ø 53cm

Цвет арматуры



G - Золото



Ni - Никель



Pa - Патина

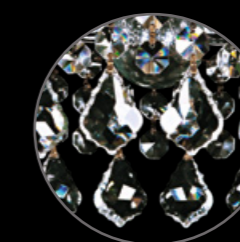
Форма хрусталя (серии 1920х, 1477х, 1478х)



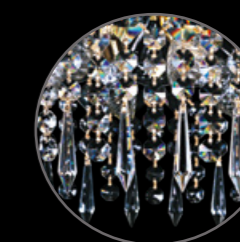
По умолчанию,  
в каплях



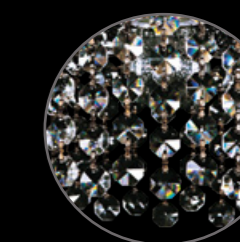
Balls  
Шарики



Leafs  
Дубки



Drops  
Пику



R  
Октагоны



# Разъяснение артикула

Пример:



# Типы светильников



# Типы светильников





## Высота светильника



19271/55IV G



19271/H2/55IV Ni



19271/H1/55IV Ni

Высота люстры указана от верхнего обода до нижнего хрусталика. Высота балдахина не учитывается.

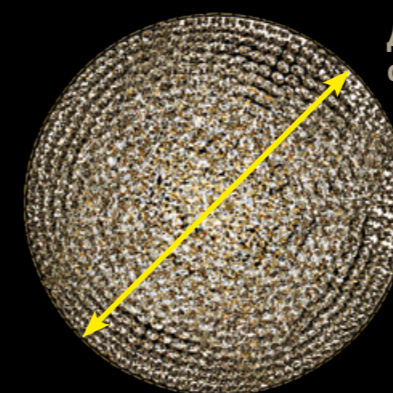
Допустимая погрешность размеров составляет 1-3 см (высота и ширина).

В параметрах указан вес нетто (без коробки), допускается погрешность - 10%.

## Диаметр светильника

19xxx/15xx/x

- 20
- 25
- 35
- 45
- 55
- 60
- 70
- 80
- 90
- 100
- 125
- 145



Диаметр светильника



Ø 35



Ø 25



Ø 20



Ø 15



Ø 45



Ø 55



Ø 60



Ø 70



Ø 80



Ø 90



Ø 100

В наличии Ø от 15 см до 300 см



## Цвет обода

19xxx/xxxx G

**G** Золото



**GB** Золото чернёное



**GW** Золото белёное



**GI** Золото слоновая кость



**Ni** Никель



**NB** Никель чернёный



**NW** Никель белёный



**Pa** Французская патина



**PB** Французская патина чернёная



**PW** Французская патина белёная



Пример:

19271/70IV G

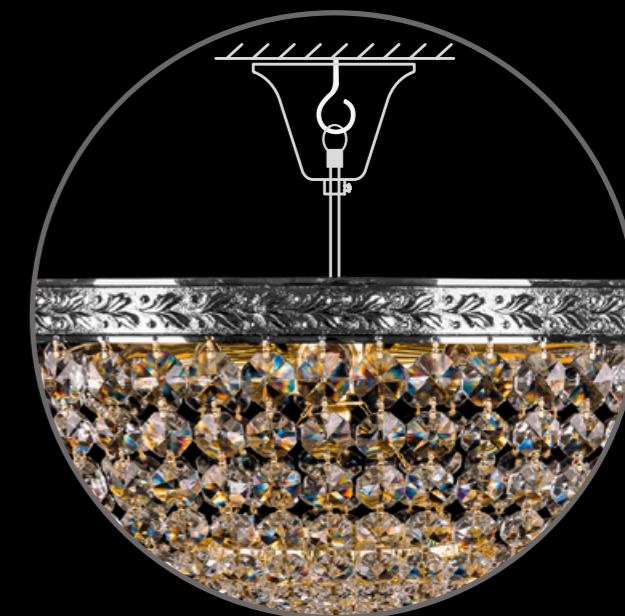


19271/70IV Ni



## Крепление к потолку

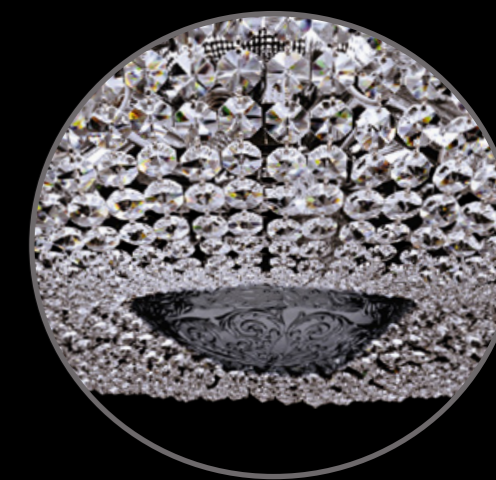
По умолчанию все светильники имеют тип крепления на крючок, с потолочным креплением (планкой) светильник можно изготовить под заказ.



## Варианты нижней чашки



**C1**



19111/H1/70IV Ni C1



19111/H1/70IV Ni



Серия 14771



**14771/35 G**  
↔ 35 cm † 50 cm (+15 cm)  
💎 x 6 (E14 - 40W)  
weight ≈ 7 kg



**14771/25 G**  
↔ 25 cm † 40 cm (+15 cm)  
💎 x 4 (E14 - 40W)  
weight ≈ 4 kg



**14771/22 G**  
↔ 22 cm † 35 cm (+15 cm)  
💎 x 3 (E14 - 40W)  
weight ≈ 3 kg



**14771/30 G**  
↔ 30 cm † 45 cm (+15 cm)  
💎 x 5 (E14 - 40W)  
weight ≈ 5 kg



**14771/15 G**  
↔ 15 cm † 25 cm (+15 cm)  
💎 x 1 (E14 - 40W)  
weight ≈ 1 kg



**14781/15 G R**  
↔ 15 cm † 20 cm (+15 cm)  
💎 x 1 (E14 - 40W)  
weight ≈ 1 kg



**14781/15 Ni**  
↔ 15 cm † 20 cm (+15 cm)  
💎 x 1 (E14 - 40W)  
weight ≈ 1 kg



**14781/15 G Balls**  
↔ 15 cm † 20 cm (+15 cm)  
💎 x 1 (E14 - 40W)  
weight ≈ 1 kg



**14781/15 G Drops**  
↔ 15 cm † 20 cm (+15 cm)  
💎 x 1 (E14 - 40W)  
weight ≈ 1 kg



**14781/15 G Leaves**  
↔ 15 cm † 20 cm (+15 cm)  
💎 x 1 (E14 - 40W)  
weight ≈ 1 kg



Серия 14781



**14781/22 Ni Drops**  
 ↔ 22 cm † 28 cm (+15 cm)  
 ♦ x 3 (E14 - 40W)  
 weight ≈ 2 kg



**14781/25 G Leafs**  
 ↔ 25 cm † 30 cm (+15 cm)  
 ♦ x 4 (E14 - 40W)  
 weight ≈ 3 kg



**14781/22 Ni**  
 ↔ 22 cm † 28 cm (+15 cm)  
 ♦ x 3 (E14 - 40W)  
 weight ≈ 2 kg



**14781/22 G R**  
 ↔ 22 cm † 30 cm (+15 cm)  
 ♦ x 3 (E14 - 40W)  
 weight ≈ 2 kg



**14781/25 Pa**  
 ↔ 25 cm † 30 cm (+15 cm)  
 ♦ x 4 (E14 - 40W)  
 weight ≈ 3 kg



**14781/25 Ni R**  
 ↔ 25 cm † 30 cm (+15 cm)  
 ♦ x 4 (E14 - 40W)  
 weight ≈ 3 kg



**14781/22 Pa Leafs**  
 ↔ 22 cm † 28 cm (+15 cm)  
 ♦ x 3 (E14 - 40W)  
 weight ≈ 2 kg

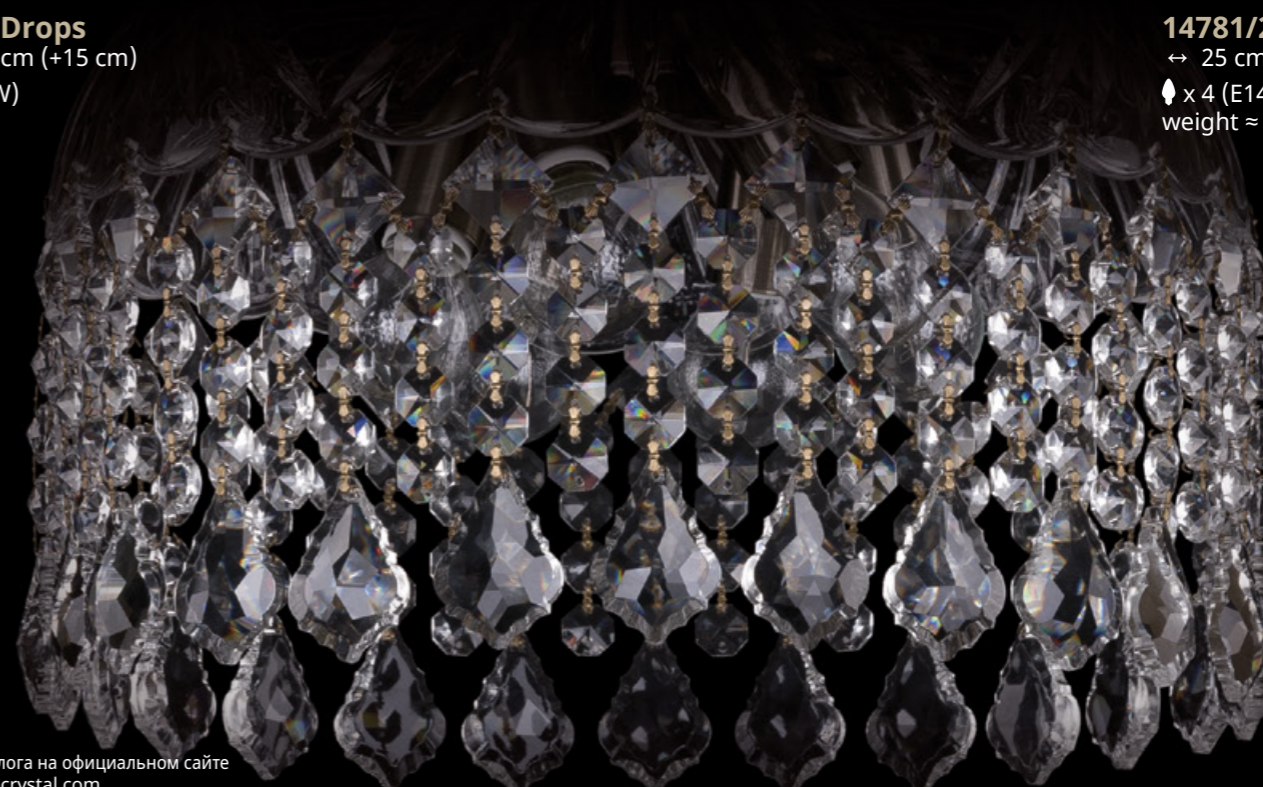


**14781/22 Ni Balls**  
 ↔ 22 cm † 28 cm (+15 cm)  
 ♦ x 3 (E14 - 40W)  
 weight ≈ 3 kg

**14781/25 G Drops**  
 ↔ 25 cm † 30 cm (+15 cm)  
 ♦ x 4 (E14 - 40W)  
 weight ≈ 3 kg



**14781/25 Ni Balls**  
 ↔ 25 cm † 30 cm (+15 cm)  
 ♦ x 4 (E14 - 40W)  
 weight ≈ 3 kg







**14781/30 Pa**  
↔ 30 cm † 32 cm (+15 cm)  
♦ x 5 (E14 - 40W)  
weight ≈ 5kg



**14781/30 Ni R**  
↔ 30 cm † 35 cm (+15 cm)  
♦ x 5 (E14 - 40W)  
weight ≈ 4 kg



**14781/35 Ni Balls**  
↔ 35 cm † 35 cm (+15 cm)  
♦ x 6 (E14 - 40W)  
weight ≈ 7 kg



**14781/35 Ni**  
↔ 35 cm † 35 cm (+15 cm)  
♦ x 6 (E14 - 40W)  
weight ≈ 6 kg



**14781/35 G R**  
↔ 35 cm † 35 cm (+15 cm)  
♦ x 6 (E14 - 40W)  
weight ≈ 6 kg

**14781/30 G Balls**  
↔ 30 cm † 32 cm (+15 cm)  
♦ x 5 (E14 - 40W)  
weight ≈ 5 kg



**14781/30 Ni Drops**  
↔ 30 cm † 32 cm (+15 cm)  
♦ x 5 (E14 - 40W)  
weight ≈ 4 kg



**14781/30 G Leafs**  
↔ 30 cm † 32 cm (+15 cm)  
♦ x 5 (E14 - 40W)  
weight ≈ 5 kg



**14781/35 G Drops**  
↔ 35 cm † 35 cm (+15 cm)  
♦ x 6 (E14 - 40W)  
weight ≈ 6 kg



**14781/35 G Leafs**  
↔ 35 cm † 35 cm (+15 cm)  
♦ x 6 (E14 - 40W)  
weight ≈ 6 kg





**14771L1/22 Ni**  
↔ 22 cm † 40 cm  
♦ x 3 (E14 - 40W)  
weight ≈ 3 kg



**14771L2/22 G**  
↔ 22 cm † 37 cm  
♦ x 3 (E14 - 40W)  
weight ≈ 3 kg



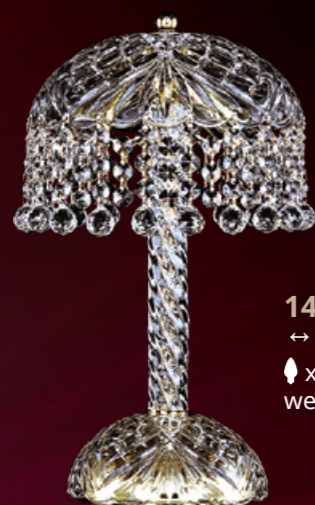
**14781L1/22 G**  
↔ 22 cm † 40 cm  
♦ x 3 (E14 - 40W)  
weight ≈ 4 kg



**14781L1/22 G Balls**  
↔ 22 cm † 40 cm  
♦ x 3 (E14 - 40W)  
weight ≈ 4 kg



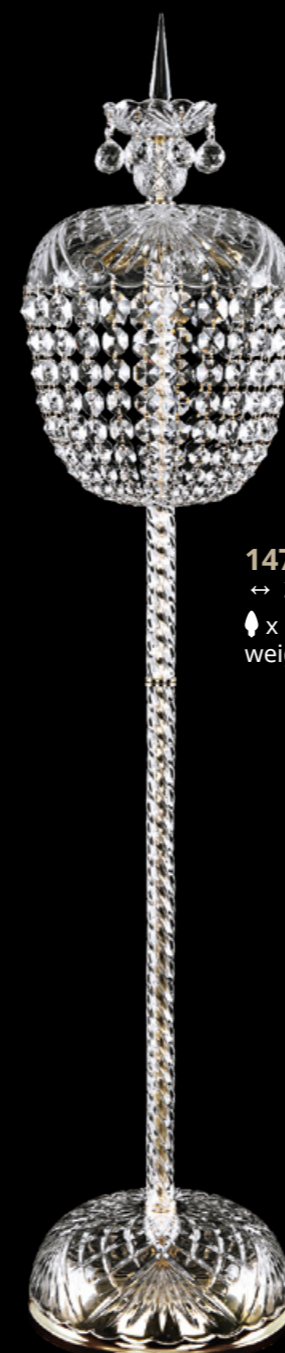
**14781L1/22 G Leafs**  
↔ 22 cm † 40 cm  
♦ x 3 (E14 - 40W)  
weight ≈ 4 kg



**14781L2/22 G Balls**  
↔ 22 cm † 37 cm  
♦ x 3 (E14 - 40W)  
weight ≈ 3 kg



**14781L2/22 G R**  
↔ 22 cm † 37 cm  
♦ x 3 (E14 - 64W)  
weight ≈ 3 kg



**14771T2/30-145 G**  
↔ 30 cm † 145 cm  
♦ x 5 (E14 - 40W)  
weight ≈ 15 kg



**14771T1/35-145 G**  
↔ 35 cm † 145 cm  
♦ x 6 (E14 - 40W)  
weight ≈ 17 kg



**14781T1/30-145 G**  
↔ 30 cm † 145 cm  
♦ x 5 (E14 - 40W)  
weight ≈ 15 kg



**14781T2/35-145 G Drops**  
↔ 35 cm † 145 cm  
♦ x 6 (E14 - 40W)  
weight ≈ 14 kg





**19201/15IV Ni Balls**  
 ↔ 15 cm † 27 cm (+15 cm)  
 ♦ x 1 (E14 - 40W)  
 weight ≈ 1 kg



**19201/15IV Ni**  
 ↔ 15 cm † 27 cm (+15 cm)  
 ♦ x 1 (E14 - 40W)  
 weight ≈ 1 kg



**19201/15IV Ni R**  
 ↔ 15 cm † 27 cm (+15 cm)  
 ♦ x 1 (E14 - 40W)  
 weight ≈ 1 kg



**19201/20IV G**  
 ↔ 20 cm † 30 cm (+15 cm)  
 ♦ x 1 (E14 - 40W)  
 weight ≈ 2 kg



**19201/20IV G R**  
 ↔ 20 cm † 30 cm (+15 cm)  
 ♦ x 1 (E14 - 40W)  
 weight ≈ 2 kg



**19201/15IV Ni Drops**  
 ↔ 15 cm † 27 cm (+15 cm)  
 ♦ x 1 (E14 - 40W)  
 weight ≈ 1 kg



**19201/15IV Ni Leafs**  
 ↔ 15 cm † 27 cm (+15 cm)  
 ♦ x 1 (E14 - 40W)  
 weight ≈ 1 kg

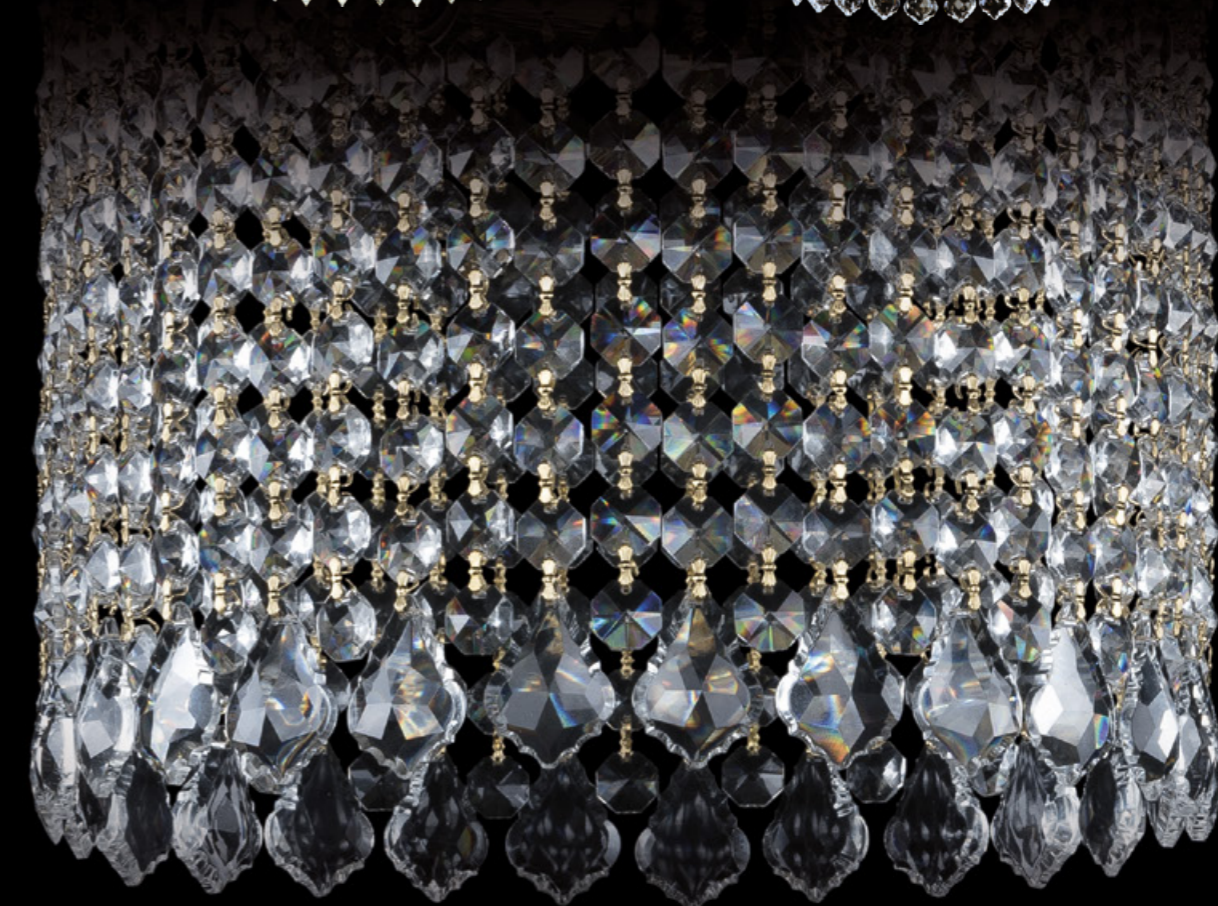
**19201/20IV G Balls**  
 ↔ cm 20 † 30 cm (+15 cm)  
 ♦ x 1 (E14 - 40W)  
 weight ≈ 2 kg



**19201/20IV G Drops**  
 ↔ 20 cm † 30 cm (+15 cm)  
 ♦ x 1 (E14 - 40W)  
 weight ≈ 2 kg



**19201/20IV G Leafs**  
 ↔ 20 cm † 30 cm (+15 cm)  
 ♦ x 1 (E14 - 40W)  
 weight ≈ 2 kg





**19201/25IV G**  
 ↔ 25 cm † 26 cm  
 ♦ x 3 (E14 - 40W)  
 weight ≈ 3 kg



**19201/25IV G Balls**  
 ↔ 25 cm † 26 cm  
 ♦ x 3 (E14 - 40W)  
 weight ≈ 3 kg



**19201/25IV G R**  
 ↔ 25 cm † 26 cm  
 ♦ x 3 (E14 - 40W)  
 weight ≈ 3 kg



**19201/25IV G Drops**  
 ↔ 25 cm † 26 cm  
 ♦ x 3 (E14 - 40W)  
 weight ≈ 3 kg



**19201/25IV G Leafs**  
 ↔ 25 cm † 26 cm  
 ♦ x 3 (E14 - 40W)  
 weight ≈ 3 kg



**19201L4/H/20IV Pa**  
 ↔ 20 cm † 41 cm  
 ♦ x 3 (E14 - 40W)  
 weight ≈ 3 kg



**19201L6/H/20IV Pa Balls**  
 ↔ 20 cm † 41 cm  
 ♦ x 3 (E14 - 40W)  
 weight ≈ 3 kg



**19201L4/25IV Ni Drops**  
 ↔ 25 cm † 42 cm  
 ♦ x 4 (E14 - 40W)  
 weight ≈ 3 kg



**19201L6/25IV Ni R**  
 ↔ 25 cm † 42 cm  
 ♦ x 4 (E14 - 40W)  
 weight ≈ 3 kg





**19051/100IV G**  
 ↔ 100 cm x ↓ 35 cm  
 ♦ x 20 (E14 - 40W)  
 weight ≈ 25 kg



**19051/125IV**  
 ↔ 125 cm x ↓ 40 cm

**19051/145IV**  
 ↔ 145 cm x ↓ 45 cm

**19051/200IV**  
 ↔ 200 cm x ↓ 55 cm

**19051/250IV**  
 ↔ 250 cm x ↓ 60 cm

**19051/300IV**  
 ↔ 300 cm x ↓ 90 cm



**19051/20IV**  
 ↔ 20 cm x ↓ 15 cm  
 ♦ x 2 (E14 - 40W)

**19051/25IV**  
 ↔ 25 cm x ↓ 15 cm  
 ♦ x 3 (E14 - 40W)

**19051/45IV**  
 ↔ 45 cm x ↓ 15 cm  
 ♦ x 6 (E14 - 40W)



**19051/35IV G**  
 ↔ 35 cm x ↓ 15 cm  
 ♦ x 4 (E14 - 40W)  
 weight ≈ 3 kg

**19051/55IV G**  
 ↔ 55 cm x ↓ 20 cm  
 ♦ x 8 (E14 - 40W)  
 weight ≈ 7 kg

**19051/60IV**  
 ↔ 60 cm x ↓ 20 cm  
 ♦ x 10 (E14 - 40W)

**19051/70IV**  
 ↔ 70 cm x ↓ 25 cm  
 ♦ x 16 (E14 - 40W)



**19051/80IV G**  
 ↔ 80 cm x ↓ 30 cm  
 ♦ x 16 (E14 - 40W)  
 weight ≈ 17 kg



**19051/90IV G**  
 ↔ 90 cm x ↓ 35 cm  
 ♦ x 20 (E14 - 40W)



**19051/H1/100IV G**  
 ↔ 100 cm x ↓ 80 cm  
 ♦ x 26 (E14 - 40W)  
 weight ≈ 25 kg



**19051/H1/20IV**  
 ↔ 20 cm x ↓ 25 cm  
 ♦ x 3 (E14 - 40W)

**19051/H1/25IV**  
 ↔ 25 cm x ↓ 25 cm  
 ♦ x 3 (E14 - 40W)

**19051/H1/45IV**  
 ↔ 45 cm x ↓ 35 cm  
 ♦ x 8 (E14 - 40W)



**19051/H1/35IV G**  
 ↔ 35 cm x ↓ 30 cm  
 ♦ x 6 (E14 - 40W)  
 weight ≈ 4kg

**19051/H1/55IV G**  
 ↔ 55 cm x ↓ 45 cm  
 ♦ x 12 (E14 - 40W)  
 weight ≈ 8 kg



**19051/H1/60IV**  
 ↔ 60 cm x ↓ 50 cm  
 ♦ x 15 (E14 - 40W)

**19051/H1/70IV**  
 ↔ 70 cm x ↓ 55 cm  
 ♦ x 22 (E14 - 40W)



**19051/H1/125IV**  
 ↔ 125 cm x ↓ 95 cm

**19051/H1/200IV**  
 ↔ 200 cm x ↓ 130 cm

**19051/H1/300IV**  
 ↔ 300 cm x ↓ 185 cm

**19051/H1/145IV**  
 ↔ 145 cm x ↓ 110 cm

**19051/H1/250IV**  
 ↔ 250 cm x ↓ 145 cm



**19051/H1/80IV G**  
 ↔ 80 cm x ↓ 65 cm  
 ♦ x 22 (E14 - 40W)  
 weight ≈ 17 kg

**19051/H1/90IV**  
 ↔ 90 cm x ↓ 75 cm  
 ♦ x 26 (E14 - 40W)



**19051/H2/100IV G**  
 ↔ 100 cm x ↓ 130 cm  
 ♦ x 26 (E14 - 40W)  
 weight ≈ 28 kg



**19051/H2/35IV G**  
 ↔ 35 cm x ↓ 45 cm  
 ♦ x 6 (E14 - 40W)  
 weight ≈ 4 kg



**19051/H2/25IV**  
 ↔ 25 cm x ↓ 40 cm  
 ♦ x 3 (E14 - 40W)

**19051/H2/45IV**  
 ↔ 45 cm x ↓ 55 cm  
 ♦ x 8 (E14 - 40W)



**19051/H2/80IV G**  
 ↔ 80 cm x ↓ 100 cm  
 ♦ x 22 (E14 - 40W)  
 weight ≈ 20 kg



**19051/H2/90IV**  
 ↔ 90 cm x ↓ 115 cm  
 ♦ x 26 (E14 - 40W)



**19051/H2/125IV**  
 ↔ 125 cm x ↓ 205 cm

**19051/H2/200IV**  
 ↔ 200 cm x ↓ 280 cm

**19051/H2/300IV**  
 ↔ 300 cm x ↓ 375 cm

**19051/H2/145IV**  
 ↔ 145 cm x ↓ 240 cm

**19051/H2/250IV**  
 ↔ 250 cm x ↓ 315 cm

**19051/H2/55IV G**  
 ↔ 55 cm x ↓ 75 cm  
 ♦ x 12 (E14 - 40W)  
 weight ≈ 9 kg

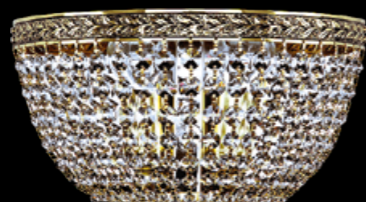
**19051/H2/60IV**  
 ↔ 60 cm x ↓ 75 cm  
 ♦ x 15 (E14 - 40W)

**19051/H2/70IV**  
 ↔ 70 cm x ↓ 90 cm  
 ♦ x 22 (E14 - 40W)





**19051B/20IV G**  
↔ 20 cm x 11 cm x ↑ 13 cm  
◆ x 1 (E14 - 40W)  
weight ≈ 1 kg



**19051B/25IV GB**  
↔ 25 cm x 13 cm x ↑ 14 cm  
◆ x 2 (E14 - 40W)  
weight ≈ 1 kg



**19051B/35IV NB**  
↔ 35 cm x 18 cm x ↑ 17 cm  
◆ x 3 (E14 - 40W)  
weight ≈ 2 kg



**19051B/H1/20IV G**  
↔ 20 cm x 11 cm x ↑ 28 cm  
◆ x 2 (E14 - 40W)  
weight ≈ 2 kg



**19051B/H1/25IV GB**  
↔ 25 cm x 13 cm x ↑ 33 cm  
◆ x 3 (E14 - 40W)  
weight ≈ 2 kg



**19051B/H1/35IV NB**  
↔ 35 cm x 18 cm x ↑ 42 cm  
◆ x 4 (E14 - 40W)  
weight ≈ 2 kg



**19051B/H2/20IV G**  
↔ 20 cm x 11 cm x ↑ 33 cm  
◆ x 2 (E14 - 40W)  
weight ≈ 2 kg



**19051B/H2/25IV GB**  
↔ 25 cm x 13 cm x ↑ 39 cm  
◆ x 3 (E14 - 40W)  
weight ≈ 2 kg



**19051B/H2/35IV NB**  
↔ 35 cm x 18 cm x ↑ 51 cm  
◆ x 4 (E14 - 40W)  
weight ≈ 3 kg



**19051L4/H/20IV G**  
↔ 20 cm ↑ 41 cm  
◆ x 3 (E14 - 40W)  
weight ≈ 2 kg



**19051L6/H/20IV Pa**  
↔ 20 cm ↑ 41 cm  
◆ x 3 (E14 - 40W)  
weight ≈ 2 kg



**19051L4/H/25IV Ni**  
↔ 25 cm ↑ 52 cm  
◆ x 3 (E14 - 40W)  
weight ≈ 3 kg



**19051L6/25IV Ni**  
↔ 25 cm ↑ 41 cm  
◆ x 3 (E14 - 40W)  
weight ≈ 3 kg



**19051L4/25IV Ni**  
↔ 25 cm ↑ 41 cm  
◆ x 3 (E14 - 40W)  
weight ≈ 3 kg





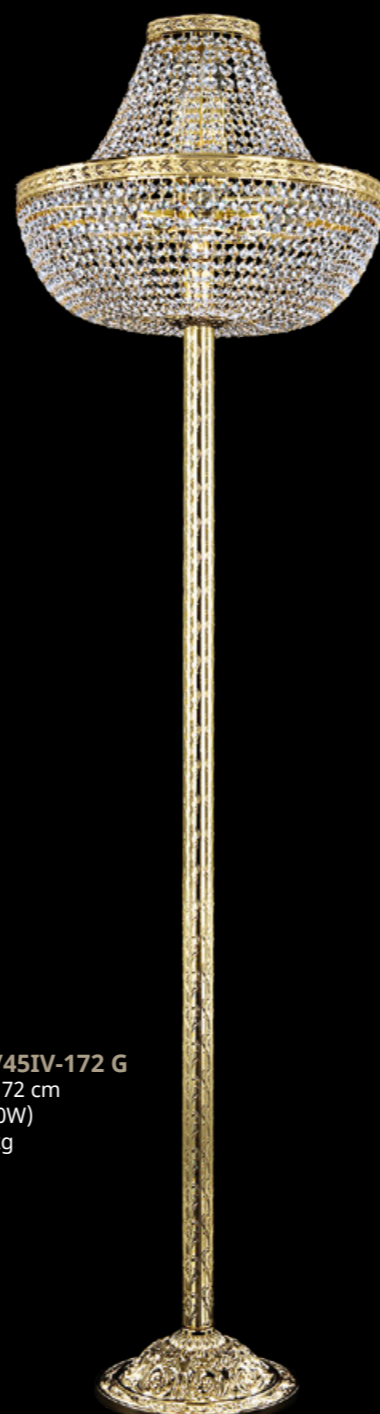
19051T4/35IV-138 G  
↔ 35 cm † 138 cm  
◆ x 4 (E14 - 40W)  
weight ≈ 13 kg



19051T3/H/45IV-172 G  
↔ 45 cm † 172 cm  
◆ x 8 (E14 - 40W)  
weight ≈ 15 kg



19051T6/35IV-138 G  
↔ 35 cm † 138 cm  
◆ x 4 (E14 - 40W)  
weight ≈ 13 kg



19051T6/H/45IV-172 G  
↔ 45 cm † 172 cm  
◆ x 8 (E14 - 40W)  
weight ≈ 13 kg







**19111/100IV G**  
↔ 100 cm x ↓ 35 cm  
◆ x 20 (E14 - 40W)  
weight ≈ 28kg



**19111/125IV**  
↔ 125 cm x ↓ 40 cm

**19111/200IV**  
↔ 200 cm x ↓ 55 cm

**19111/300IV**  
↔ 300 cm x ↓ 90 cm

**19111/145IV**  
↔ 145 cm x ↓ 45 cm

**19111/250IV**  
↔ 250 cm x ↓ 60 cm



**19111/20IV**  
↔ 20 cm x ↓ 15 cm  
◆ x 2 (E14 - 40W)

**19111/25IV**  
↔ 25 cm x ↓ 15 cm  
◆ x 3 (E14 - 40W)

**19111/45IV**  
↔ 45 cm x ↓ 15 cm  
◆ x 6 (E14 - 40W)



**19111/35IV Ni**  
↔ 35 cm x ↓ 15 cm  
◆ x 4 (E14 - 40W)  
weight ≈ 3 kg

**19111/55IV G**  
↔ 55 cm x ↓ 20 cm  
◆ x 8 (E14 - 40W)  
weight ≈ 7 kg

**19111/60IV**  
↔ 60 cm x ↓ 20 cm  
◆ x 10 (E14 - 40W)

**19111/70IV**  
↔ 70 cm x ↓ 25 cm  
◆ x 16 (E14 - 40W)



**19111/80IV G**  
↔ 80 cm x ↓ 30 cm  
◆ x 16 (E14 - 40W)  
weight ≈ 18 kg

**19111/90IV**  
↔ 90 cm x ↓ 35 cm  
◆ x 20 (E14 - 40W)





**19111/H1/100IV G**  
 ↔ 100 cm x ↓ 80 cm  
 ♦ x 26 (E14 - 40W)  
 weight ≈ 27 kg



**19111/H1/20IV**  
 ↔ 20 cm x ↓ 25 cm  
 ♦ x 3 (E14 - 40W)

**19111/H1/25IV**  
 ↔ 25 cm x ↓ 25 cm  
 ♦ x 3 (E14 - 40W)

**19111/H1/45IV**  
 ↔ 45 cm x ↓ 35 cm  
 ♦ x 8 (E14 - 40W)



**19111/H1/35IV G**  
 ↔ 35 cm x ↓ 30 cm  
 ♦ x 6 (E14 - 40W)  
 weight ≈ 4 kg

**19111/H1/60IV**  
 ↔ 60 cm x ↓ 50 cm  
 ♦ x 15 (E14 - 40W)

**19111/H1/70IV**  
 ↔ 70 cm x ↓ 55 cm  
 ♦ x 22 (E14 - 40W)



**19111/H1/125IV**  
 ↔ 125 cm x ↓ 95 cm

**19111/H1/200IV**  
 ↔ 200 cm x ↓ 130 cm

**19111/H1/300IV**  
 ↔ 300 cm x ↓ 185 cm

**19111/H1/145IV**  
 ↔ 145 cm x ↓ 110 cm

**19111/H1/250IV**  
 ↔ 250 cm x ↓ 145 cm

**19111/H1/55IV G**  
 ↔ 55 cm x ↓ 45 cm  
 ♦ x 12 (E14 - 40W)  
 weight ≈ 8kg



**19111/H1/80IV GB**  
 ↔ 80 cm x ↓ 65 cm  
 ♦ x 22 (E14 - 40W)  
 weight ≈ 20kg

**19111/H1/90IV**  
 ↔ 90 cm x ↓ 75 cm  
 ♦ x 26 (E14 - 40W)



**19111/H2/100IV G**  
↔ 100 cm x ↑ 130 cm  
◆ x 26 (E14 - 40W)  
weight ≈ 33 kg



**19111/H2/125IV**  
↔ 125 cm x ↑ 205 cm

**19111/H2/145IV**  
↔ 145 cm x ↑ 240 cm

**19111/H2/200IV**  
↔ 200 cm x ↑ 280 cm

**19111/H2/250IV**  
↔ 250 cm x ↑ 315 cm

**19111/H2/300IV**  
↔ 300 cm x ↑ 375 cm

**19111/H2/25IV**  
↔ 25 cm x ↑ 40 cm  
◆ x 3 (E14 - 40W)

**19111/H2/45IV**  
↔ 45 cm x ↑ 55 cm  
◆ x 8 (E14 - 40W)



**19111/H2/35IV G**  
↔ 35 cm x ↑ 45 cm  
◆ x 6 (E14 - 40W)  
weight ≈ 5 kg



**19111/H2/80IV G**  
↔ 80 cm x ↑ 100 cm  
◆ x 22 (E14 - 40W)  
weight ≈ 22kg

**19111/H2/90IV**  
↔ 90 cm x ↑ 115 cm  
◆ x 26 (E14 - 40W)

**19111/H2/60IV**  
↔ 60 cm x ↑ 75 cm  
◆ x 15 (E14 - 40W)

**19111/H2/55IV G**  
↔ 55 cm x ↑ 75 cm  
◆ x 12 (E14 - 40W)  
weight ≈ 10 kg

**19111/H2/70IV**  
↔ 70 cm x ↑ 90 cm  
◆ x 22 (E14 - 40W)





**1911B/25IV G**  
↔ 25 cm x 13cm x ↑ 14 cm  
◆ x 2 (E14 - 40W)  
weight ≈ 1 kg

**1911B/20IV**  
↔ 20 cm x 11cm x ↑ 12cm  
◆ x 1 (E14 - 40W)

**1911B/35IV**  
↔ 35 cm x 18cm x ↑ 17 cm  
◆ x 3 (E14 - 40W)



**1911B/H1/25IV G**  
↔ 25 cm x 13cm x ↑ 33 cm  
◆ x 3 (E14 - 40W)  
weight ≈ 2 kg

**1911B/H1/20IV**  
↔ 20 cm x 11cm x ↑ 28 cm  
◆ x 2 (E14 - 40W)

**1911B/H1/35IV**  
↔ 35 cm x 18cm x ↑ 42 cm  
◆ x 4 (E14 - 40W)



**1911B/H2/35IV Ni**  
↔ 35 cm x 18cm x ↑ 51 cm  
◆ x 4 (E14 - 40W)  
weight ≈ 3 kg

**1911B/H2/20IV**  
↔ 20 cm x 11cm x ↑ 33 cm  
◆ x 2 (E14 - 40W)

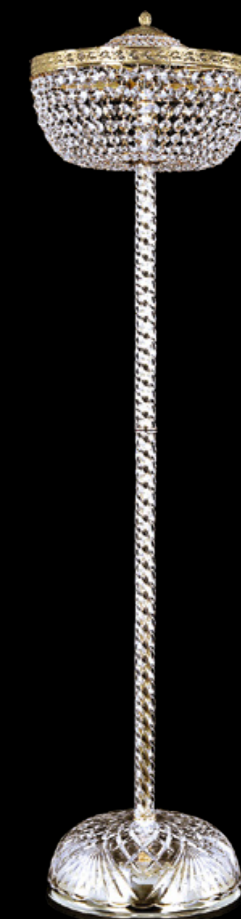
**1911B/H2/25IV**  
↔ 25 cm x 13cm x ↑ 39 cm  
◆ x 3 (E14 - 40W)



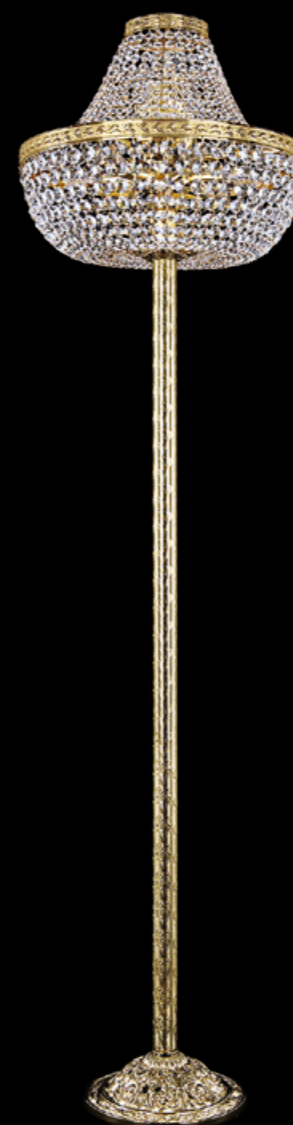
**1911L4/25IV Ni**  
↔ 25 cm ↑ 44 cm  
◆ x 3 (E14 - 40W)  
weight ≈ 3 kg



**1911L6/25IV Ni**  
↔ 25 cm ↑ 42 cm  
◆ x 3 (E14 - 40W)  
weight ≈ 3 kg



**1911T4/35IV-138 G**  
↔ 35 cm ↑ 138 cm  
◆ x 4 (E14 - 40W)  
weight ≈ 13 kg



**1911T6/H/45IV-172 G**  
↔ 45 cm ↑ 172 cm  
◆ x 8 (E14 - 40W)  
weight ≈ 13 kg



**1911L4/H/25IV Ni**  
↔ 25 cm ↑ 52 cm  
◆ x 3 (E14 - 40W)  
weight ≈ 3 kg



**1911L6/H/20IV Ni**  
↔ 20 cm ↑ 42 cm  
◆ x 3 (E14 - 40W)  
weight ≈ 2 kg





**19151/35IV Ni**  
↔ 35 cm x ↑ 15 cm  
◆ x 4 (E14 - 40W)  
weight ≈ 4 kg



**19151/20IV**  
↔ 20 cm x ↑ 15 cm  
◆ x 2 (E14 - 40W)

**19151/25IV**  
↔ 25 cm x ↑ 15 cm  
◆ x 3 (E14 - 40W)

**19151/45IV**  
↔ 45 cm x ↑ 18 cm  
◆ x 6 (E14 - 40W)

**19151/100IV G**  
↔ 100 cm x ↑ 35 cm  
◆ x 20 (E14 - 40W)  
weight ≈ 36 kg



**19151/125IV**  
↔ 125 cm x ↑ 40 cm

**19151/200IV**  
↔ 200 cm x ↑ 55 cm

**19151/300IV**  
↔ 300 cm x ↑ 90 cm

**19151/145IV**  
↔ 145 cm x ↑ 45 cm

**19151/250IV**  
↔ 250 cm x ↑ 60 cm



**19151/55IV G**  
↔ 55 cm x ↑ 20 cm  
◆ x 8 (E14 - 40W)  
weight ≈ 9 kg

**19151/60IV**  
↔ 60 cm x ↑ 20 cm  
◆ x 10 (E14 - 40W)

**19151/70IV**  
↔ 70 cm x ↑ 25 cm  
◆ x 16 (E14 - 40W)



**19151/80IV G**  
↔ 80 cm x ↑ 30 cm  
◆ x 16 (E14 - 40W)  
weight ≈ 24 kg

**19151/90IV**  
↔ 90 cm x ↑ 35 cm  
◆ x 20 (E14 - 40W)







**19011/100IV G**  
↔ 100 cm x ↓ 35 cm  
◆ x 20 (E14 - 40W)  
weight ≈ 28 kg



**19011/125IV**  
↔ 125 cm x ↓ 40 cm

**19011/145IV**  
↔ 145 cm x ↓ 45 cm

**19011/200IV**  
↔ 200 cm x ↓ 55 cm

**19011/250IV**  
↔ 250 cm x ↓ 60 cm

**19011/300IV**  
↔ 300 cm x ↓ 90 cm



**19011/55IV G**  
↔ 55 cm x ↓ 20 cm  
◆ x 8 (E14 - 40W)  
weight ≈ 8 kg

**19011/60IV**  
↔ 60 cm x ↓ 20 cm  
◆ x 10 (E14 - 40W)

**19011/70IV**  
↔ 70 cm x ↓ 25 cm  
◆ x 16 (E14 - 40W)



**19011/80IV G**  
↔ 80 cm x ↓ 30 cm  
◆ x 16 (E14 - 40W)  
weight ≈ 20 kg

**19011/90IV**  
↔ 90 cm x ↓ 35 cm  
◆ x 20 (E14 - 40W)

**19011/35IV G**  
↔ 35 cm x ↓ 15 cm  
◆ x 4 (E14 - 40W)  
weight ≈ 4 kg



**19011/20IV**  
↔ 20 cm x ↓ 15 cm  
◆ x 2 (E14 - 40W)

**19011/25IV**  
↔ 25 cm x ↓ 15 cm  
◆ x 3 (E14 - 40W)

**19011/45IV**  
↔ 45 cm x ↓ 15 cm  
◆ x 6 (E14 - 40W)





**19011/H1/20IV**  
↔ 20 cm x ↑ 25 cm  
◆ x 3 (E14 - 40W)

**19011/H1/25IV**  
↔ 25 cm x ↑ 25 cm  
◆ x 3 (E14 - 40W)

**19011/H1/35IV**  
↔ 35 cm x ↑ 30 cm  
◆ x 6 (E14 - 40W)

**19011/H1/45IV**  
↔ 45 cm x ↑ 35 cm  
◆ x 8 (E14 - 40W)

**19011/H1/60IV G**  
↔ 60 cm x ↑ 50 cm  
◆ x 15 (E14 - 40W)  
weight ≈ 10 kg



**19011/H1/55IV**  
↔ 55 cm x ↑ 45 cm  
◆ x 12 (E14 - 40W)

**19011/H1/70IV**  
↔ 70 cm x ↑ 55 cm  
◆ x 22 (E14 - 40W)

**19011/H1/90IV**  
↔ 90 cm x ↑ 75 cm  
◆ x 26 (E14 - 40W)

**19011/H1/100IV**  
↔ 100 cm x ↑ 80 cm  
◆ x 26 (E14 - 40W)

**19011/H1/80IV G**  
↔ 80 cm x ↑ 65 cm  
◆ x 22 (E14 - 40W)  
weight ≈ 20 kg

**19011/H2/55IV G**  
↔ 55 cm x ↑ 75 cm  
◆ x 12 (E14 - 40W)  
weight ≈ 10 kg



**19011/H2/25IV**  
↔ 25 cm x ↑ 40 cm  
◆ x 3 (E14 - 40W)

**19011/H2/35IV**  
↔ 35 cm x ↑ 45 cm  
◆ x 6 (E14 - 40W)

**19011/H2/45IV**  
↔ 45 cm x ↑ 55 cm  
◆ x 8 (E14 - 40W)

**19011/H2/60IV**  
↔ 60 cm x ↑ 75 cm  
◆ x 15 (E14 - 40W)

**19011/H2/70IV**  
↔ 70 cm x ↑ 90 cm  
◆ x 22 (E14 - 40W)

**19011/H2/90IV**  
↔ 90 cm x ↑ 115 cm  
◆ x 26 (E14 - 40W)

**19011/H2/100IV**  
↔ 100 cm x ↑ 130 cm  
◆ x 26 (E14 - 40W)

**19011/H2/80IV G**  
↔ 80 cm x ↑ 100 cm  
◆ x 22 (E14 - 40W)  
weight ≈ 23 kg







**19011B/25IV G**  
↔ 25 cm x 13cm x ↓ 14 cm  
◆ x 2 (E14 - 40W)  
weight ≈ 1 kg

**19011B/20IV**  
↔ 20 cm x 11cm x ↓ 13 cm  
◆ x 1 (E14 - 40W)

**19011B/35IV**  
↔ 35 cm x 18cm x ↓ 17 cm  
◆ x 3 (E14 - 40W)



**19011B/H1/25IV G**  
↔ 25 cm x 13cm x ↓ 33 cm  
◆ x 3 (E14 - 40W)  
weight ≈ 2 kg

**19011B/H1/20IV**  
↔ 20 cm x 11cm x ↓ 28 cm  
◆ x 2 (E14 - 40W)

**19011B/H1/35IV**  
↔ 35 cm x 18cm x ↓ 42 cm  
◆ x 4 (E14 - 40W)



**19011B/H2/35IV G**  
↔ 35 cm x 18cm x ↓ 51 cm  
◆ x 4 (E14 - 40W)  
weight ≈ 3 kg

**19011B/H2/20IV**  
↔ 20 cm x 11cm x ↓ 33 cm  
◆ x 2 (E14 - 40W)

**19011B/H2/25IV**  
↔ 25 cm x 13cm x ↓ 39 cm  
◆ x 3 (E14 - 40W)



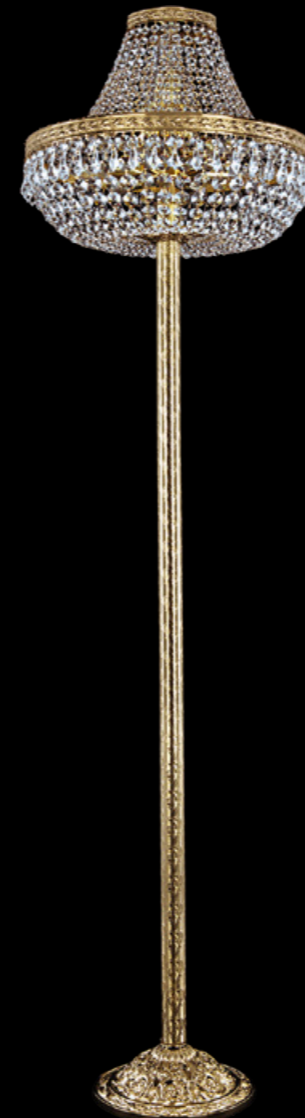
**19011L4/25IV Ni**  
↔ 25 cm ↓ 44 cm  
◆ x 3 (E14 - 40W)  
weight ≈ 3 kg



**19011L6/25IV Ni**  
↔ 25 cm ↓ 42 cm  
◆ x 3 (E14 - 40W)  
weight ≈ 3 kg



**19011T4/35IV-138 G**  
↔ 35 cm ↓ 138 cm  
◆ x 4 (E14 - 40W)  
weight ≈ 13 kg



**19011T6/H/45IV-172 G**  
↔ 45 cm ↓ 172 cm  
◆ x 8 (E14 - 40W)  
weight ≈ 13 kg



**19011L4/H/25IV Ni**  
↔ 25 cm ↓ 52 cm  
◆ x 3 (E14 - 40W)  
weight ≈ 4 kg



**19011L6/H/20IV G**  
↔ 20 cm ↓ 42 cm  
◆ x 3 (E14 - 40W)  
weight ≈ 3 kg





**19271/100IV G**  
 ↔ 100 cm x ↓ 45 cm  
 ♦ x 20 (E14 - 40W)  
 weight ≈ 30 kg



**19271/125IV**  
 ↔ 125 cm x ↓ 55 cm

**19271/200IV**  
 ↔ 200 cm x ↓ 90 cm

**19271/300IV**  
 ↔ 300 cm x ↓ 135 cm

**19271/145IV**  
 ↔ 145 cm x ↓ 60 cm

**19271/250IV**  
 ↔ 250 cm x ↓ 110 cm



**19271/20IV**  
 ↔ 20 cm x ↓ 15 cm  
 ♦ x 2 (E14 - 40W)

**19271/25IV**  
 ↔ 25 cm x ↓ 20 cm  
 ♦ x 3 (E14 - 40W)

**19271/45IV**  
 ↔ 45 cm x ↓ 25 cm  
 ♦ x 6 (E14 - 40W)



**19271/55IV G**  
 ↔ 55 cm x ↓ 25 cm  
 ♦ x 8 (E14 - 40W)  
 weight ≈ 8 kg

**19271/60IV**  
 ↔ 60 cm x ↓ 30 cm  
 ♦ x 10 (E14 - 40W)

**19271/70IV**  
 ↔ 70 cm x ↓ 35 cm  
 ♦ x 16 (E14 - 40W)

**19271/35IV GW**  
 ↔ 35 cm x ↓ 20 cm  
 ♦ x 4 (E14 - 40W)  
 weight ≈ 4 kg



**19271/80IV Ni**  
 ↔ 80 cm x ↓ 35 cm  
 ♦ x 16 (E14 - 40W)  
 weight ≈ 20 kg

**19271/90IV**  
 ↔ 90 cm x ↓ 40 cm  
 ♦ x 20 (E14 - 40W)





**19271/H1/100IV GW**  
 ↔ 100 cm x ↓ 85 cm  
 ♦ x 26 (E14 - 40W)  
 weight ≈ 28 kg



**19271/H1/125IV**  
 ↔ 125 cm x ↓ 110 cm

**19271/H1/145IV**  
 ↔ 145 cm x ↓ 125 cm

**19271/H1/200IV**  
 ↔ 200 cm x ↓ 165 cm

**19271/H1/250IV**  
 ↔ 250 cm x ↓ 195 cm

**19271/H1/300IV**  
 ↔ 300 cm x ↓ 230 cm

**19271/H1/20IV**  
 ↔ 20 cm x ↓ 25 cm  
 ♦ x 3 (E14 - 40W)

**19271/H1/25IV**  
 ↔ 25 cm x ↓ 30 cm  
 ♦ x 3 (E14 - 40W)

**19271/H1/45IV**  
 ↔ 45 cm x ↓ 45 cm  
 ♦ x 8 (E14 - 40W)



**19271/H1/35IV GW**  
 ↔ 35 cm x ↓ 35 cm  
 ♦ x 6 (E14 - 40W)  
 weight ≈ 5 kg

**19271/H1/55IV Ni**  
 ↔ 55 cm x ↓ 55 cm  
 ♦ x 12 (E14 - 40W)  
 weight ≈ 10 kg



**19271/H1/60IV**  
 ↔ 60 cm x ↓ 55 cm  
 ♦ x 15 (E14 - 40W)

**19271/H1/70IV**  
 ↔ 70 cm x ↓ 70 cm  
 ♦ x 22 (E14 - 40W)



**19271/H1/80IV G**  
 ↔ 80 cm x ↓ 75 cm  
 ♦ x 22 (E14 - 40W)  
 weight ≈ 20 kg

**19271/H1/90IV**  
 ↔ 90 cm x ↓ 80 cm  
 ♦ x 26 (E14 - 40W)



**19271/H2/100IV G**  
 ↔ 100 cm x ↓ 140 cm  
 ♦ x 26 (E14 - 40W)  
 weight ≈ 34 kg



**19271/H2/125IV**  
 ↔ 125 cm x ↓ 165 cm

**19271/H2/145IV**  
 ↔ 145 cm x ↓ 190 cm

**19271/H2/200IV**  
 ↔ 200 cm x ↓ 240 cm

**19271/H2/250IV**  
 ↔ 250 cm x ↓ 280 cm

**19271/H2/300IV**  
 ↔ 300 cm x ↓ 325 cm

**19271/H2/35IV G**  
 ↔ 35 cm x ↓ 50 cm  
 ♦ x 6 (E14 - 40W)  
 weight ≈ 5 kg



**19271/H2/25IV**  
 ↔ 25 cm x ↓ 45 cm  
 ♦ x 3 (E14 - 40W)

**19271/H2/45IV**  
 ↔ 45 cm x ↓ 60 cm  
 ♦ x 8 (E14 - 40W)



**19271/H2/80IV Ni**  
 ↔ 80 cm x ↓ 110 cm  
 ♦ x 22 (E14 - 40W)  
 weight ≈ 21 kg

**19271/H2/90IV**  
 ↔ 90 cm x ↓ 125 cm  
 ♦ x 26 (E14 - 40W)



**19271/H2/55IV Ni**  
 ↔ 55 cm x ↓ 80 cm  
 ♦ x 12 (E14 - 40W)  
 weight ≈ 10 kg

**19271/H2/60IV**  
 ↔ 60 cm x ↓ 80 cm  
 ♦ x 15 (E14 - 40W)

**19271/H2/70IV**  
 ↔ 70 cm x ↓ 100 cm  
 ♦ x 22 (E14 - 40W)





**19271B/25IV G**  
 ↔ 25 cm x 13cm x ↑ 18 cm  
 ♦ x 2 (E14 - 40W)  
 weight ≈ 1 kg

**19271B/20IV**  
 ↔ 20 cm x 11cm x ↑ 16 cm  
 ♦ x 1 (E14 - 40W)

**19271B/35IV**  
 ↔ 35 cm x 18cm x ↑ 20 cm  
 ♦ x 3 (E14 - 40W)



**19271B/H1/25IV G**  
 ↔ 25 cm x 13cm x ↑ 36 cm  
 ♦ x 3 (E14 - 40W)  
 weight ≈ 2 kg

**19271B/H1/20IV**  
 ↔ 20 cm x 11cm x ↑ 31 cm  
 ♦ x 2 (E14 - 40W)

**19271B/H1/35IV**  
 ↔ 35 cm x 18cm x ↑ 46 cm  
 ♦ x 4 (E14 - 40W)



**19271B/H2/35IV G**  
 ↔ 35 cm x 18cm x ↑ 55 cm  
 ♦ x 4 (E14 - 40W)  
 weight ≈ 3 kg

**19271B/H2/20IV**  
 ↔ 20 cm x 11cm x ↑ 36 cm  
 ♦ x 2 (E14 - 40W)

**19271B/H2/25IV**  
 ↔ 25 cm x 13cm x ↑ 43 cm  
 ♦ x 3 (E14 - 40W)



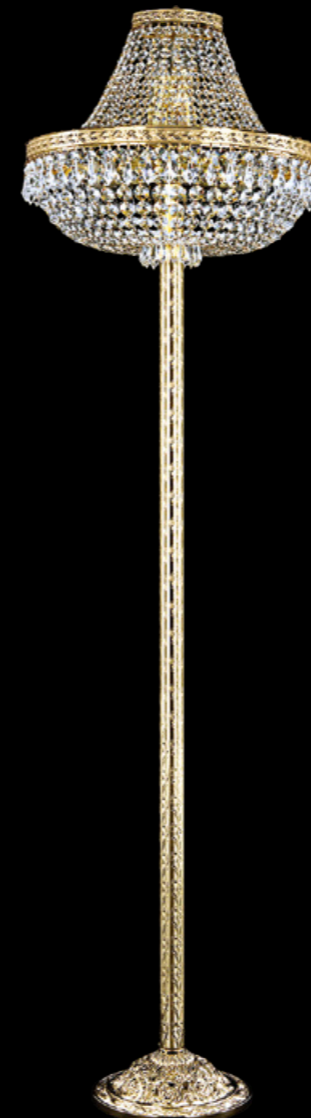
**19271L4/25IV Ni**  
 ↔ 25 cm ↑ 44 cm  
 ♦ x 3 (E14 - 40W)  
 weight ≈ 4 kg



**19271L6/25IV Ni**  
 ↔ 25 cm ↑ 42 cm  
 ♦ x 3 (E14 - 40W)  
 weight ≈ 3 kg



**19271T4/35IV-138 G**  
 ↔ 35 cm ↑ 138 cm  
 ♦ x 4 (E14 - 40W)  
 weight ≈ 13 kg



**19271T6/H/45IV-172 G**  
 ↔ 45 cm ↑ 172 cm  
 ♦ x 8 (E14 - 40W)  
 weight ≈ 13kg



**19271L4/H/25IV Ni**  
 ↔ 25 cm ↑ 52 cm  
 ♦ x 3 (E14 - 40W)  
 weight ≈ 4 kg



**19271L6/H/20IV G**  
 ↔ 20 cm ↑ 42 cm  
 ♦ x 3 (E14 - 40W)  
 weight ≈ 3 kg





**19281/35IV GW**  
↔ 35 cm x ↓ 20 cm  
◆ x 4 (E14 - 40W)  
weight ≈ 3 kg



**19281/20IV**  
↔ 20 cm x ↓ 20 cm  
◆ x 2 (E14 - 40W)

**19281/25IV**  
↔ 25 cm x ↓ 20 cm  
◆ x 3 (E14 - 40W)

**19281/45IV**  
↔ 45 cm x ↓ 20 cm  
◆ x 6 (E14 - 40W)

**19281/100IV G**  
↔ 100 cm x ↓ 35 cm  
◆ x 20 (E14 - 40W)  
weight ≈ 29 kg



**19281/125IV**  
↔ 125 cm x ↓ 40 cm

**19281/200IV**  
↔ 200 cm x ↓ 55 cm

**19281/300IV**  
↔ 300 cm x ↓ 90 cm

**19281/145IV**  
↔ 145 cm x ↓ 45 cm

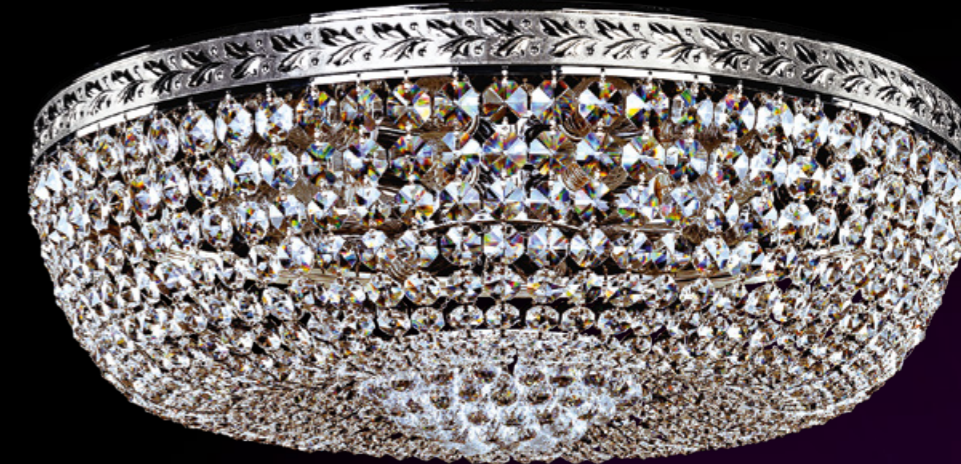
**19281/250IV**  
↔ 250 cm x ↓ 60 cm



**19281/60IV Ni**  
↔ 60 cm x ↓ 30 cm  
◆ x 10 (E14 - 40W)  
weight ≈ 11 kg

**19281/55IV**  
↔ 55 cm x ↓ 25 cm  
◆ x 8 (E14 - 40W)

**19281/70IV**  
↔ 70 cm x ↓ 35 cm  
◆ x 16 (E14 - 40W)



**19281/80IV GB**  
↔ 80 cm x ↓ 35 cm  
◆ x 16 (E14 - 40W)  
weight ≈ 17 kg

**19281/90IV**  
↔ 90 cm x ↓ 35 cm  
◆ x 20 (E14 - 40W)



**19281/H1/100IV G**  
 ↔ 100 cm x ↓ 80 cm  
 ♦ x 26 (E14 - 40W)  
 weight ≈ 28 kg



**19281/H1/20IV**  
 ↔ 20 cm x ↓ 25 cm  
 ♦ x 3 (E14 - 40W)

**19281/H1/25IV**  
 ↔ 25 cm x ↓ 25 cm  
 ♦ x 3 (E14 - 40W)

**19281/H1/45IV**  
 ↔ 45 cm x ↓ 40 cm  
 ♦ x 8 (E14 - 40W)



**19281/H1/35IV G**  
 ↔ 35 cm x ↓ 35 cm  
 ♦ x 6 (E14 - 40W)  
 weight ≈ 5 kg

**19281/H1/55IV G**  
 ↔ 55 cm x ↓ 55 cm  
 ♦ x 12 (E14 - 40W)  
 weight ≈ 9 kg



**19281/H1/60IV**  
 ↔ 60 cm x ↓ 55 cm  
 ♦ x 15 (E14 - 40W)

**19281/H1/70IV**  
 ↔ 70 cm x ↓ 60 cm  
 ♦ x 22 (E14 - 40W)



**19281/H1/125IV**  
 ↔ 125 cm x ↓ 95 cm

**19281/H1/200IV**  
 ↔ 200 cm x ↓ 130 cm

**19281/H1/300IV**  
 ↔ 300 cm x ↓ 185 cm

**19281/H1/145IV**  
 ↔ 145 cm x ↓ 110 cm

**19281/H1/250IV**  
 ↔ 250 cm x ↓ 145 cm

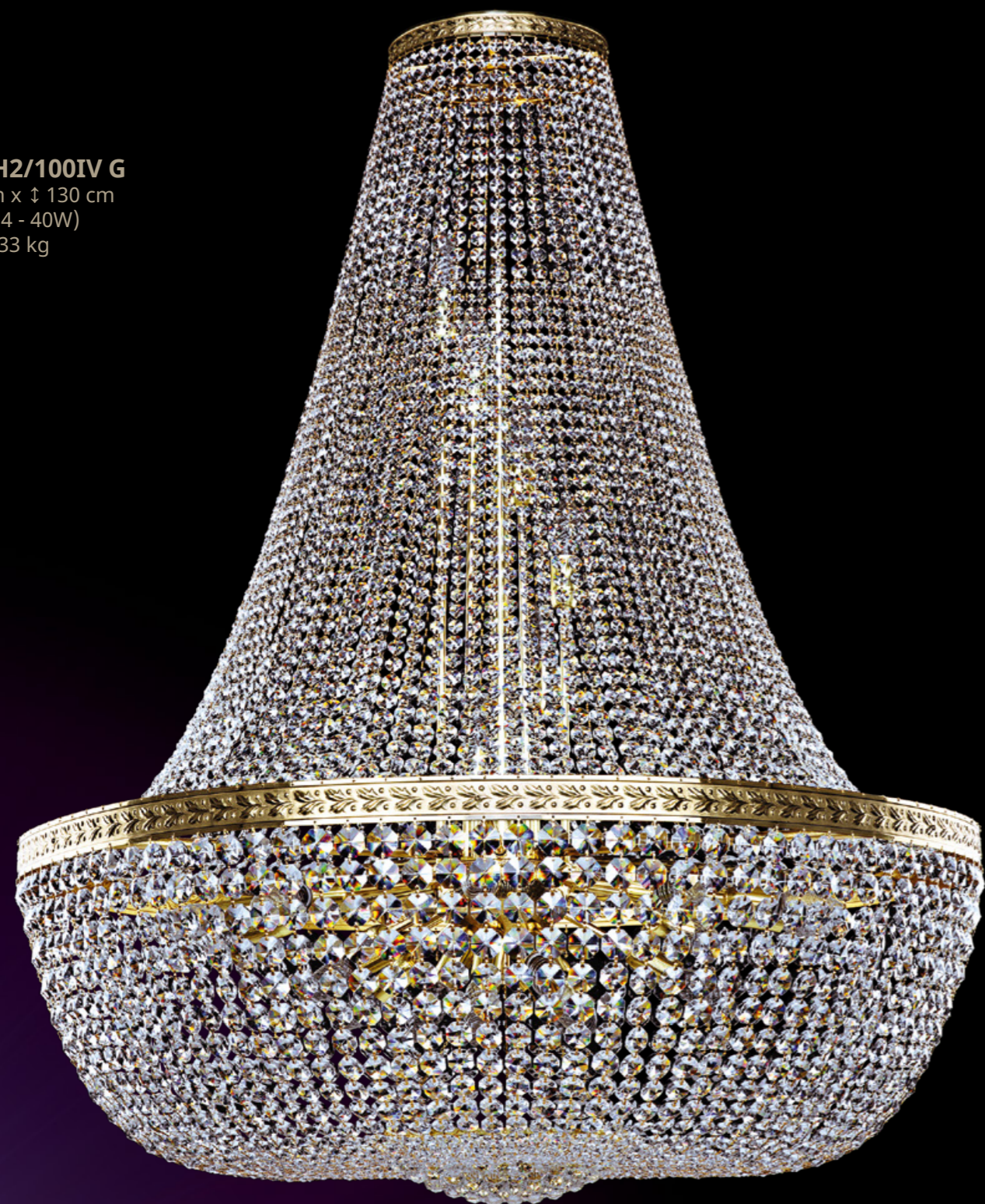
**19281/H1/80IV GB**  
 ↔ 80 cm x ↓ 70 cm  
 ♦ x 22 (E14 - 40W)  
 weight ≈ 17 kg

**19281/H1/90IV**  
 ↔ 90 cm x ↓ 75 cm  
 ♦ x 26 (E14 - 40W)





**19281/H2/100IV G**  
↔ 100 cm x ↓ 130 cm  
◆ x 26 (E14 - 40W)  
weight ≈ 33 kg



**19281/H2/35IV G**  
↔ 35 cm x ↓ 55 cm  
◆ x 6 (E14 - 40W)  
weight ≈ 5 kg



**19281/H2/25IV**  
↔ 25 cm x ↓ 40 cm  
◆ x 3 (E14 - 40W)

**19281/H2/45IV**  
↔ 45 cm x ↓ 60 cm  
◆ x 8 (E14 - 40W)



**19281/H2/125IV**  
↔ 125 cm x ↓ 150 cm

**19281/H2/200IV**  
↔ 200 cm x ↓ 205 cm

**19281/H2/300IV**  
↔ 300 cm x ↓ 280 cm

**19281/H2/145IV**  
↔ 145 cm x ↓ 175 cm

**19281/H2/250IV**  
↔ 250 cm x ↓ 230 cm



**19281/H2/80IV GB**  
↔ 80 cm x ↓ 105 cm  
◆ x 22 (E14 - 40W)  
weight ≈ 21 kg

**19281/H2/90IV**  
↔ 90 cm x ↓ 120 cm  
◆ x 26 (E14 - 40W)

**19281/H2/60IV**  
↔ 60 cm x ↓ 80 cm  
◆ x 15 (E14 - 40W)

**19281/H2/55IV G**  
↔ 55 cm x ↓ 75 cm  
◆ x 12 (E14 - 40W)  
weight ≈ 10 kg

**19281/H2/70IV**  
↔ 70 cm x ↓ 95 cm  
◆ x 22 (E14 - 40W)





**19281B/25IV G**  
↔ 25 cm x 13cm x ↑ 18 cm  
◆ x 2 (E14 - 40W)  
weight ≈ 2 kg

**19281B/20IV**  
↔ 20 cm x 11cm x ↑ 16 cm  
◆ x 1 (E14 - 40W)

**19281B/35IV**  
↔ 35 cm x 18cm x ↑ 20 cm  
◆ x 3 (E14 - 40W)



**19281B/H1/25IV G**  
↔ 25 cm x 13cm x ↑ 36 cm  
◆ x 3 (E14 - 40W)  
weight ≈ 2 kg

**19281B/H1/20IV**  
↔ 20 cm x 11cm x ↑ 31 cm  
◆ x 2 (E14 - 40W)

**19281B/H1/35IV**  
↔ 35 cm x 18cm x ↑ 46 cm  
◆ x 4 (E14 - 40W)



**19281B/H2/35IV Ni**  
↔ 35 cm x 18cm x ↑ 55 cm  
◆ x 4 (E14 - 40W)  
weight ≈ 3 kg

**19281B/H2/20IV**  
↔ 20 cm x 11cm x ↑ 36 cm  
◆ x 2 (E14 - 40W)

**19281B/H2/25IV**  
↔ 25 cm x 13cm x ↑ 43 cm  
◆ x 3 (E14 - 40W)



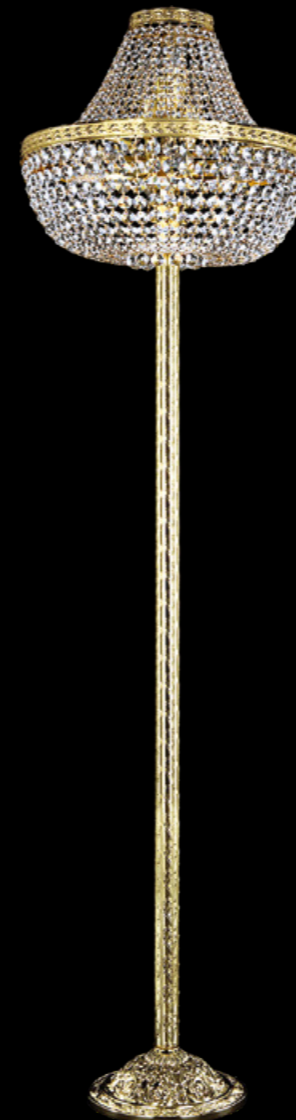
**19281L4/25IV Ni**  
↔ 25 cm ↑ 44 cm  
◆ x 3 (E14 - 40W)  
weight ≈ 3 kg



**19281L6/25IV Ni**  
↔ 25 cm ↑ 42 cm  
◆ x 3 (E14 - 40W)  
weight ≈ 3 kg



**19281T4/35IV-138 G**  
↔ 35 cm ↑ 138 cm  
◆ x 4 (E14 - 40W)  
weight ≈ 13 kg



**19281T6/H/45IV-172**  
↔ 45 cm ↑ 172 cm  
◆ x 8 (E14 - 40W)  
weight ≈ 13 kg



**19281L4/H/25IV Ni**  
↔ 25 cm ↑ 51 cm  
◆ x 3 (E14 - 40W)  
weight ≈ 4 kg



**19281L6/H/20IV Ni**  
↔ 20 cm ↑ 42 cm  
◆ x 3 (E14 - 40W)  
weight ≈ 3 kg





**19321/20IV**  
↔ 20 cm x ↑ 15 cm  
◆ x 2 (E14 - 40W)

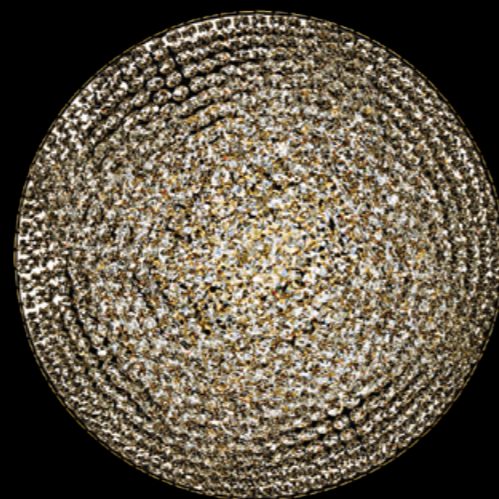
**19321/25IV**  
↔ 25 cm x ↑ 15 cm  
◆ x 3 (E14 - 40W)

**19321/45IV**  
↔ 45 cm x ↑ 15 cm  
◆ x 6 (E14 - 40W)

**19321/35IV G**  
↔ 35 cm x ↑ 12 cm  
◆ x 4 (E14 - 40W)  
weight ≈ 3 kg



**19321/100IV NB**  
↔ 100 cm x ↑ 40 cm  
◆ x 20 (E14 - 40W)  
weight ≈ 26 kg



**19321/55IV G**  
↔ 55 cm x ↑ 25 cm  
◆ x 8 (E14 - 40W)  
weight ≈ 7 kg

**19321/60IV**  
↔ 60 cm x ↑ 20 cm  
◆ x 10 (E14 - 40W)

**19321/70IV**  
↔ 70 cm x ↑ 25 cm  
◆ x 16 (E14 - 40W)



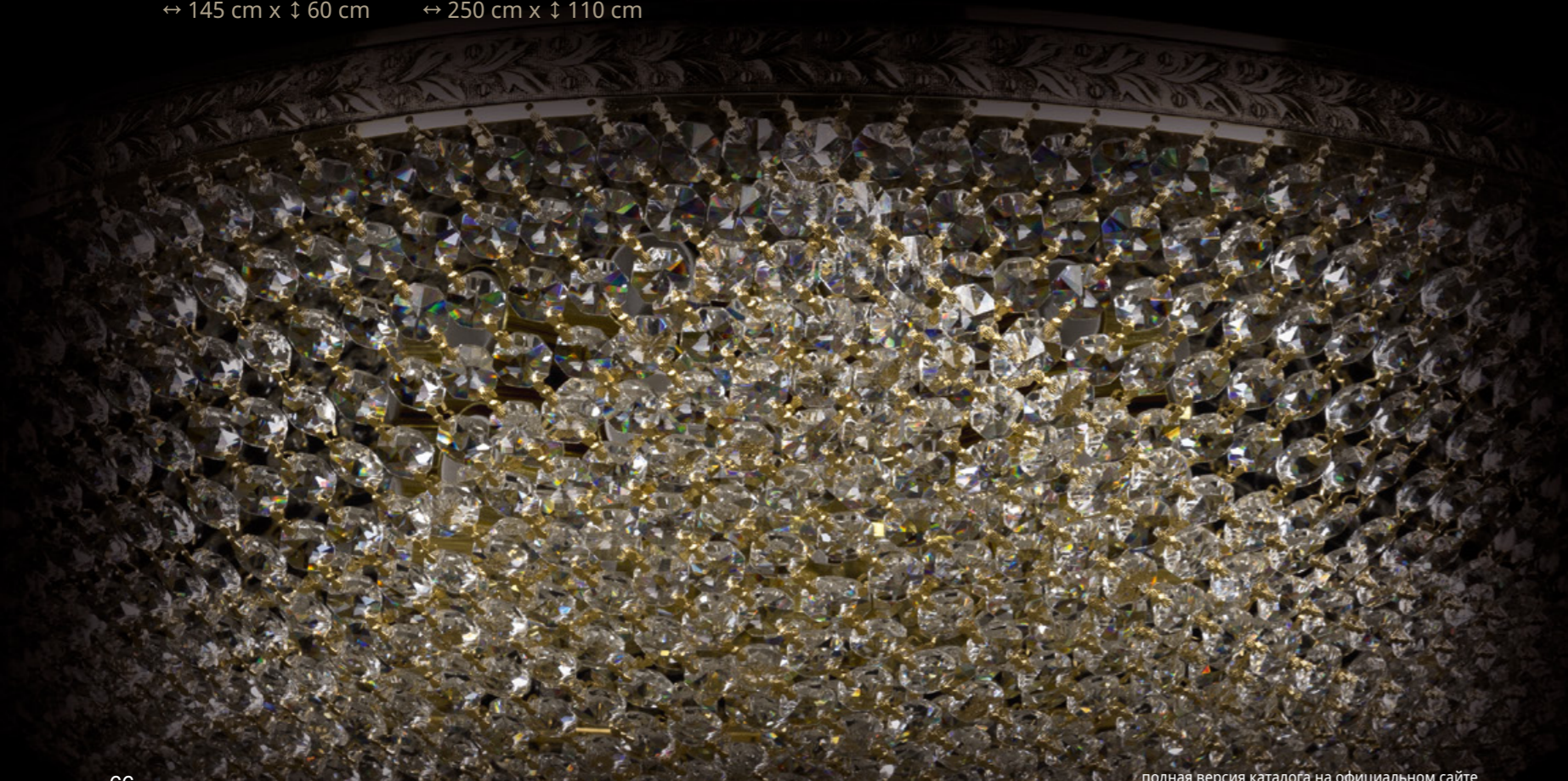
**19321/125IV**  
↔ 125 cm x ↑ 50 cm

**19321/200IV**  
↔ 200 cm x ↑ 90 cm

**19321/300IV**  
↔ 300 cm x ↑ 135 cm

**19321/145IV**  
↔ 145 cm x ↑ 60 cm

**19321/250IV**  
↔ 250 cm x ↑ 110 cm



**19321/80IV Ni**  
↔ 80 cm x ↑ 35 cm  
◆ x 16 (E14 - 40W)  
weight ≈ 23 kg

**19321/90IV**  
↔ 90 cm x ↑ 35 cm  
◆ x 20 (E14 - 40W)



**19321/H1/100IV GW**  
 ↔ 100 cm x ↓ 75 cm  
 ♦ x 26 (E14 - 40W)  
 weight ≈ 25 kg



**19321/H1/20IV**  
 ↔ 20 cm x ↓ 25 cm  
 ♦ x 3 (E14 - 40W)

**19321/H1/25IV**  
 ↔ 25 cm x ↓ 25 cm  
 ♦ x 3 (E14 - 40W)

**19321/H1/45IV**  
 ↔ 45 cm x ↓ 40 cm  
 ♦ x 8 (E14 - 40W)



**19321/H1/35IV G**  
 ↔ 35 cm x ↓ 30 cm  
 ♦ x 6 (E14 - 40W)  
 weight ≈ 4 kg

**19321/H1/55IV Ni**  
 ↔ 55 cm x ↓ 45 cm  
 ♦ x 12 (E14 - 40W)  
 weight ≈ 8 kg



**19321/H1/60IV**  
 ↔ 60 cm x ↓ 45 cm  
 ♦ x 15 (E14 - 40W)

**19321/H1/70IV**  
 ↔ 70 cm x ↓ 55 cm  
 ♦ x 22 (E14 - 40W)



**19321/H1/80IV G**  
 ↔ 80 cm x ↓ 65 cm  
 ♦ x 22 (E14 - 40W)  
 weight ≈ 17 kg

**19321/H1/90IV**  
 ↔ 90 cm x ↓ 70 cm  
 ♦ x 26 (E14 - 40W)



**19321/H1/125IV**  
 ↔ 125 cm x ↓ 105 cm

**19321/H1/200IV**  
 ↔ 200 cm x ↓ 165 cm

**19321/H1/300IV**  
 ↔ 300 cm x ↓ 240 cm

**19321/H1/145IV**  
 ↔ 145 cm x ↓ 125 cm

**19321/H1/250IV**  
 ↔ 250 cm x ↓ 195 cm



**19321/H2/100IV G**  
↔ 100 cm x ↑ 130 cm  
◆ x 26 (E14 - 40W)  
weight ≈ 29 kg



**19321/H2/125IV**  
↔ 125 cm x ↑ 160 cm

**19321/H2/145IV**  
↔ 145 cm x ↑ 190 cm

**19321/H2/200IV**  
↔ 200 cm x ↑ 240 cm

**19321/H2/250IV**  
↔ 250 cm x ↑ 280 cm

**19321/H2/300IV**  
↔ 300 cm x ↑ 335 cm

**19321/H2/25IV**  
↔ 25 cm x ↑ 40 cm  
◆ x 3 (E14 - 40W)

**19321/H2/45IV**  
↔ 45 cm x ↑ 60 cm  
◆ x 8 (E14 - 40W)



**19321/H2/35IV Ni**  
↔ 35 cm x ↑ 50 cm  
◆ x 6 (E14 - 40W)  
weight ≈ 5 kg



**19321/H2/80IV Ni**  
↔ 80 cm x ↑ 100 cm  
◆ x 22 (E14 - 40W)  
weight ≈ 19 kg

**19321/H2/90IV**  
↔ 90 cm x ↑ 115 cm  
◆ x 26 (E14 - 40W)



**19321/H2/55IV Ni**  
↔ 55 cm x ↑ 75 cm  
◆ x 12 (E14 - 40W)  
weight ≈ 9 kg

**19321/H2/60IV**  
↔ 60 cm x ↑ 75 cm  
◆ x 15 (E14 - 40W)

**19321/H2/70IV**  
↔ 70 cm x ↑ 95 cm  
◆ x 22 (E14 - 40W)





**19321B/25IV GW**  
 ↔ 25 cm x 13cm x ↑ 18 cm  
 ♦ x 2 (E14 - 40W)  
 weight ≈ 1 kg

**19321B/20IV**  
 ↔ 20 cm x 11cm x ↑ 14 cm  
 ♦ x 1 (E14 - 40W)

**19321B/35IV**  
 ↔ 35 cm x 18cm x ↑ 20 cm  
 ♦ x 3 (E14 - 40W)



**19321B/H1/25IV G**  
 ↔ 25 cm x 13cm x ↑ 36 cm  
 ♦ x 3 (E14 - 40W)  
 weight ≈ 2 kg

**19321B/H1/20IV**  
 ↔ 20 cm x 11cm x ↑ 31 cm  
 ♦ x 2 (E14 - 40W)

**19321B/H1/35IV**  
 ↔ 35 cm x 18cm x ↑ 46 cm  
 ♦ x 4 (E14 - 40W)



**19321B/H2/35IV G**  
 ↔ 35 cm x 18cm x ↑ 55 cm  
 ♦ x 4 (E14 - 40W)  
 weight ≈ 3kg

**19321B/H2/20IV**  
 ↔ 20 cm x 11cm x ↑ 36 cm  
 ♦ x 2 (E14 - 40W)

**19321B/H2/25IV**  
 ↔ 25 cm x 13cm x ↑ 41 cm  
 ♦ x 3 (E14 - 40W)







**19101/100IV G**  
↔ 100 cm x ↓ 50 cm  
◆ x 20 (E14 - 40W)  
weight ≈ 33 kg



**19101/35IV Ni**  
↔ 35 cm x ↓ 20 cm  
◆ x 4 (E14 - 40W)  
weight ≈ 3 kg

**19101/45IV**  
↔ 45 cm x ↓ 25 cm  
◆ x 6 (E14 - 40W)



**19101/125IV**  
↔ 125 cm x ↓ 60 cm

**19101/200IV**  
↔ 200 cm x ↓ 100 cm

**19101/300IV**  
↔ 300 cm x ↓ 160 cm

**19101/145IV**  
↔ 145 cm x ↓ 80 cm

**19101/250IV**  
↔ 250 cm x ↓ 130 cm



**19101/55IV G**  
↔ 55 cm x ↓ 30 cm  
◆ x 8 (E14 - 40W)  
weight ≈ 8 kg

**19101/60IV**  
↔ 60 cm x ↓ 35 cm  
◆ x 12 (E14 - 40W)

**19101/70IV**  
↔ 70 cm x ↓ 40 cm  
◆ x 16 (E14 - 40W)



**19101/80IV G**  
↔ 80 cm x ↓ 40 cm  
◆ x 16 (E14 - 40W)  
weight ≈ 18 kg



**19101/90IV**  
↔ 90 cm x ↓ 45 cm  
◆ x 20 (E14 - 40W)



**19101/H1/100IV G**  
↔ 100 cm x † 100 cm  
◆ x 26 (E14 - 40W)  
weight ≈ 28 kg



**19101/H1/35IV Ni**  
↔ 35 cm x † 40 cm  
◆ x 6 (E14 - 40W)  
weight ≈ 5 kg



**19101/H1/45IV**  
↔ 45 cm x † 45 cm  
◆ x 8 (E14 - 40W)

**19101/H1/60IV**  
↔ 60 cm x † 60 cm  
◆ x 15 (E14 - 40W)

**19101/H1/70IV**  
↔ 70 cm x † 70 cm  
◆ x 22 (E14 - 40W)



**19101/H1/55IV G**  
↔ 55 cm x † 55 cm  
◆ x 12 (E14 - 40W)  
weight ≈ 10 kg



**19101/H1/80IV GB**  
↔ 80 cm x † 80 cm  
◆ x 22 (E14 - 40W)  
weight ≈ 19 kg



**19101/H1/125IV**  
↔ 125 cm x † 115 cm

**19101/H1/145IV**  
↔ 145 cm x † 145 cm

**19101/H1/200IV**  
↔ 200 cm x † 175 cm

**19101/H1/250IV**  
↔ 250 cm x † 215 cm

**19101/H1/300IV**  
↔ 300 cm x † 255 cm

**19101/H1/90IV**  
↔ 90 cm x † 85 cm  
◆ x 26 (E14 - 40W)



**19101/H2/100IV G**  
↔ 100 cm x ↓ 140 cm  
◆ x 26 (E14 - 40W)  
weight ≈ 30 kg



**19101/H2/125IV**  
↔ 125 cm x ↓ 170 cm

**19101/H2/145IV**  
↔ 145 cm x ↓ 210 cm

**19101/H2/200IV**  
↔ 200 cm x ↓ 250 cm

**19101/H2/250IV**  
↔ 250 cm x ↓ 300 cm

**19101/H2/300IV**  
↔ 300 cm x ↓ 350 cm



**19101/H2/35IV Ni**  
↔ 35 cm x ↓ 55 cm  
◆ x 6 (E14 - 40W)  
weight ≈ 5 kg

**19101/H2/45IV**  
↔ 45 cm x ↓ 65 cm  
◆ x 8 (E14 - 40W)



**19101/H2/55IV G**  
↔ 55 cm x ↓ 75 cm  
◆ x 12 (E14 - 40W)  
weight ≈ 10 kg



**19101/H2/80IV G**  
↔ 80 cm x ↓ 115 cm  
◆ x 22 (E14 - 40W)  
weight ≈ 22 kg

**19101/H2/90IV**  
↔ 90 cm x ↓ 125 cm  
◆ x 26 (E14 - 40W)

**19101/H2/60IV**  
↔ 60 cm x ↓ 85 cm  
◆ x 15 (E14 - 40W)

**19101/H2/70IV**  
↔ 70 cm x ↓ 105 cm  
◆ x 22 (E14 - 40W)





19101B/35IV GW  
 ↔ 35 cm x 18 cm x ↑ 24 cm  
 ♦ x 3 (E14 - 40W)  
 weight ≈ 2 kg



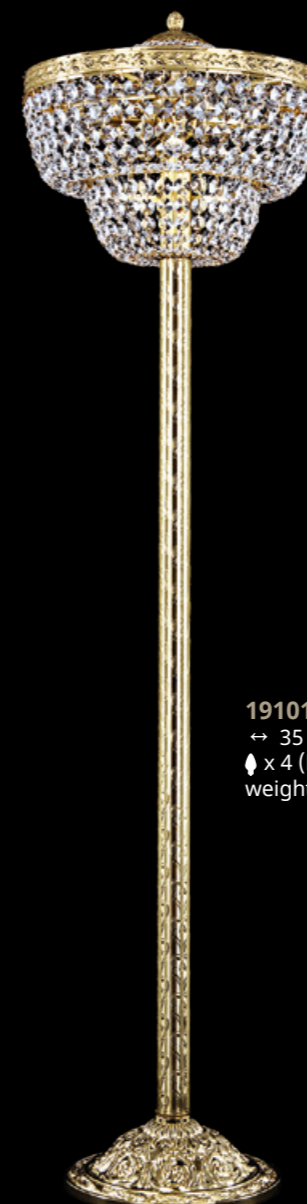
19101B/H1/35IV G  
 ↔ 35 cm x 18 cm x ↑ 48 cm  
 ♦ x 4 (E14 - 40W)  
 weight ≈ 3 kg



19101B/H2/35IV G  
 ↔ 35 cm x 18 cm x ↑ 57 cm  
 ♦ x 4 (E14 - 40W)  
 weight ≈ 3 kg



19101T4/35IV-138 G  
 ↔ 35 cm ↑ 138 cm  
 ♦ x 4 (E14 - 40W)  
 weight = 13 kg



19101T6/35IV-138 G  
 ↔ 35 cm ↑ 138 cm  
 ♦ x 4 (E14 - 40W)  
 weight ≈ 11 kg



19101T3/H/45IV-172 G  
 ↔ 45 cm ↑ 172 cm  
 ♦ x 8 (E14 - 40W)  
 weight ≈ 16 kg



19101T6/H/45IV-172 GB  
 ↔ 45 cm ↑ 172 cm  
 ♦ x 8 (E14 - 40W)  
 weight ≈ 16 kg





**19091/100IV G**  
↔ 100 cm x ↓ 50 cm  
◆ x 20 (E14 - 40W)  
weight ≈ 30 kg



**19091/35IV G**  
↔ 35 cm x ↓ 20 cm  
◆ x 4 (E14 - 40W)  
weight ≈ 3 kg

**19091/45IV**  
↔ 45 cm x ↓ 25 cm  
◆ x 6 (E14 - 40W)



**19091/125IV**  
↔ 125 cm x ↓ 60 cm

**19091/200IV**  
↔ 200 cm x ↓ 100 cm

**19091/300IV**  
↔ 300 cm x ↓ 160 cm



**19091/55IV G**  
↔ 55 cm x ↓ 30 cm  
◆ x 8 (E14 - 40W)  
weight ≈ 6 kg

**19091/60IV**  
↔ 60 cm x ↓ 35 cm  
◆ x 12 (E14 - 40W)

**19091/70IV**  
↔ 70 cm x ↓ 40 cm  
◆ x 16 (E14 - 40W)



**19091/80IV G**  
↔ 80 cm x ↓ 45 cm  
◆ x 16 (E14 - 40W)  
weight ≈ 14 kg

**19091/145IV**  
↔ 145 cm x ↓ 80 cm

**19091/250IV**  
↔ 250 cm x ↓ 130 cm



**19091/90IV**  
↔ 90 cm x ↓ 45 cm  
◆ x 20 (E14 - 40W)



**19091/H1/100IV G**  
 ↔ 100 cm x ↓ 95 cm  
 ♦ x 26 (E14 - 40W)  
 weight ≈ 24 kg



**19091/H1/35IV G**  
 ↔ 35 cm x ↓ 40 cm  
 ♦ x 6 (E14 - 40W)  
 weight ≈ 5 kg



**19091/H1/45IV**  
 ↔ 45 cm x ↓ 45 cm  
 ♦ x 8 (E14 - 40W)

**19091/H1/55IV G**  
 ↔ 55 cm x ↓ 55 cm  
 ♦ x 12 (E14 - 40W)  
 weight ≈ 8 kg



**19091/H1/60IV**  
 ↔ 60 cm x ↓ 60 cm  
 ♦ x 15 (E14 - 40W)

**19091/H1/70IV**  
 ↔ 70 cm x ↓ 70 cm  
 ♦ x 22 (E14 - 40W)



**19091/H1/80IV G**  
 ↔ 80 cm x ↓ 80 cm  
 ♦ x 22 (E14 - 40W)  
 weight ≈ 17 kg

**19091/H1/90IV**  
 ↔ 90 cm x ↓ 85 cm  
 ♦ x 26 (E14 - 40W)



**19091/H1/125IV**  
 ↔ 125 cm x ↓ 115 cm

**19091/H1/200IV**  
 ↔ 200 cm x ↓ 175 cm

**19091/H1/300IV**  
 ↔ 300 cm x ↓ 255 cm

**19091/H1/145IV**  
 ↔ 145 cm x ↓ 145 cm

**19091/H1/250IV**  
 ↔ 250 cm x ↓ 215 cm



**19091/H2/100IV G**  
↔ 100 cm x ↓ 140 cm  
◆ x 26 (E14 - 40W)  
weight ≈ 29 kg



**19091/H2/125IV**  
↔ 125 cm x ↓ 170 cm

**19091/H2/145IV**  
↔ 145 cm x ↓ 210 cm

**19091/H2/200IV**  
↔ 200 cm x ↓ 250 cm

**19091/H2/250IV**  
↔ 250 cm x ↓ 300 cm

**19091/H2/300IV**  
↔ 300 cm x ↓ 350 cm

**19091/H2/35IV G**  
↔ 35 cm x ↓ 55 cm  
◆ x 6 (E14 - 40W)  
weight ≈ 5 kg



**19091/H2/45IV**  
↔ 45 cm x ↓ 65 cm  
◆ x 8 (E14 - 40W)



**19091/H2/80IV G**  
↔ 80 cm x ↓ 115 cm  
◆ x 22 (E14 - 40W)  
weight ≈ 20 kg

**19091/H2/90IV**  
↔ 90 cm x ↓ 125 cm  
◆ x 26 (E14 - 40W)

**19421/H2/70IV**  
↔ 70 cm x ↓ 105 cm  
◆ x 22 (E14 - 40W)

**19091/H2/55IV G**  
↔ 55 cm x ↓ 75 cm  
◆ x 12 (E14 - 40W)  
weight ≈ 10 kg

**19091/H2/60IV**  
↔ 60 cm x ↓ 85 cm  
◆ x 15 (E14 - 40W)





**19091B/35IV G**  
↔ 35 cm x 18cm x ↑ 24 cm  
◆ x 3 (E14 - 40W)  
weight ≈ 2 kg



**19091B/H1/35IV G**  
↔ 35 cm x 18 cm x ↑ 48 cm  
◆ x 4 (E14 - 40W)  
weight ≈ 2 kg



**19091B/H2/35IV G**  
↔ 35 cm x 18 cm x ↑ 57 cm  
◆ x 4 (E14 - 40W)  
weight ≈ 3 kg



**19091T4/35IV-138 G**  
↔ 35 cm ↑ 138 cm  
◆ x 4 (E14 - 40W)  
weight ≈ 13 kg



**19091T6/35IV-138 G**  
↔ 35 cm ↑ 138cm  
◆ x 4 (E14 - 40W)  
weight ≈ 10 kg



**19091T3/H/45IV-172 G**  
↔ 45 cm ↑ 172 cm  
◆ x 8 (E14 - 40W)  
weight ≈ 15 kg



**19091T6/H/45IV-172 G**  
↔ 45 cm ↑ 172 cm  
◆ x 8 (E14 - 40W)  
weight ≈ 13 kg





**19031/100IV G**  
↔ 100 cm x ↑ 25 cm  
◆ x 20 (E14 - 40W)  
weight ≈ 24 kg



**19031/125IV**  
↔ 125 cm x ↑ 27 cm

**19031/200IV**  
↔ 200 cm x ↑ 34 cm

**19031/300IV**  
↔ 300 cm x ↑ 47 cm

**19031/145IV**  
↔ 145 cm x ↑ 30 cm

**19031/250IV**  
↔ 250 cm x ↑ 40 cm



**19031/55IV Ni**  
↔ 55 cm x ↑ 16 cm  
◆ x 8 (E14 - 40W)  
weight ≈ 8 kg

**19031/60IV**  
↔ 60 cm x ↑ 18 cm  
◆ x 10 (E14 - 40W)

**19031/70IV**  
↔ 70 cm x ↑ 20 cm  
◆ x 12 (E14 - 40W)



**19031/35IV GW**  
↔ 35 cm x ↑ 15 cm  
◆ x 4 (E14 - 40W)  
weight ≈ 3 kg

**19031/45IV**  
↔ 45 cm x ↑ 15 cm  
◆ x 6 (E14 - 40W)



**19031/80IV GB**  
↔ 80 cm x ↑ 22 cm  
◆ x 16 (E14 - 40W)  
weight ≈ 17 kg

**19031/90IV**  
↔ 90 cm x ↑ 24 cm  
◆ x 18 (E14 - 40W)







**19041/100IV G**  
↔ 100 cm x ↑ 25 cm  
◆ x 20 (E14 - 40W)  
weight ≈ 26 kg



**19041/125IV**  
↔ 125 cm x ↑ 27 cm

**19041/200IV**  
↔ 200 cm x ↑ 34 cm

**19041/300IV**  
↔ 300 cm x ↑ 47 cm

**19041/145IV**  
↔ 145 cm x ↑ 30 cm

**19041/250IV**  
↔ 250 cm x ↑ 40 cm



**19041/55IV GB**  
↔ 55 cm x ↑ 16 cm  
◆ x 8 (E14 - 40W)  
weight ≈ 7 kg

**19041/60IV**  
↔ 60 cm x ↑ 18 cm  
◆ x 10 (E14 - 40W)

**19041/70IV**  
↔ 70 cm x ↑ 20 cm  
◆ x 12 (E14 - 40W)



**19041/35IV G**  
↔ 35 cm x ↑ 15 cm  
◆ x 4 (E14 - 40W)  
weight ≈ 4 kg

**19041/45IV**  
↔ 45 cm x ↑ 15 cm  
◆ x 6 (E14 - 40W)



**19041/80IV G**  
↔ 80 cm x ↑ 22 cm  
◆ x 16 (E14 - 40W)  
weight ≈ 17 kg

**19041/90IV**  
↔ 90 cm x ↑ 24 cm  
◆ x 18 (E14 - 40W)







**19041B/25IV GW**  
 ↔ 25 cm x 13 cm x ↓ 14 cm  
 ♦ x 2 (E14 - 40W)  
 weight ≈ 1 kg



**19041B/35IV Pa**  
 ↔ 35 cm x 18 cm x ↓ 17 cm  
 ♦ x 3 (E14 - 40W)  
 weight ≈ 2 kg



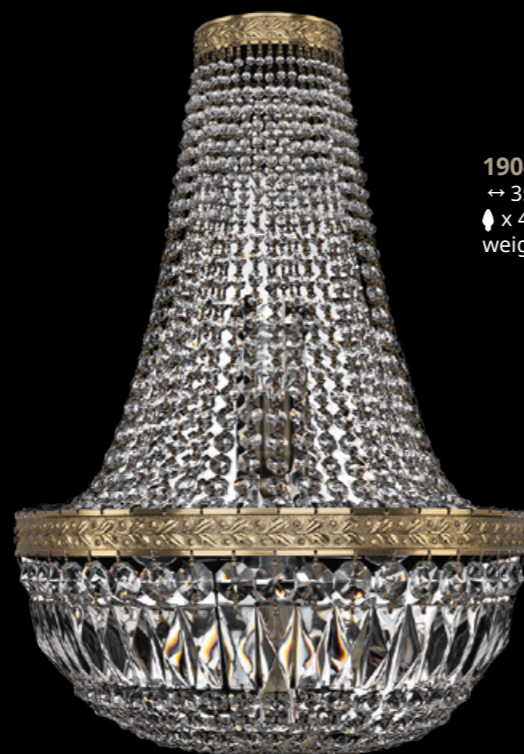
**19041B/H1/25IV GW**  
 ↔ 25 cm x 13 cm x ↓ 33 cm  
 ♦ x 3 (E14 - 40W)  
 weight ≈ 2 kg



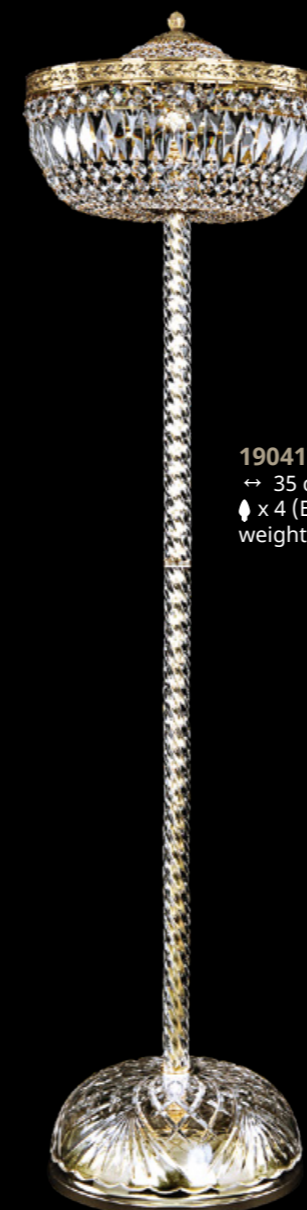
**19041B/H1/35IV Pa**  
 ↔ 35 cm x 18 cm x ↓ 42 cm  
 ♦ x 4 (E14 - 40W)  
 weight ≈ 3 kg



**19041B/H2/25IV GW**  
 ↔ 25 cm x 13 cm x ↓ 39 cm  
 ♦ x 3 (E14 - 40W)  
 weight ≈ 2 kg



**19041B/H2/35IV Pa**  
 ↔ 35 cm x 18 cm x ↓ 51 cm  
 ♦ x 4 (E14 - 40W)  
 weight ≈ 3 kg



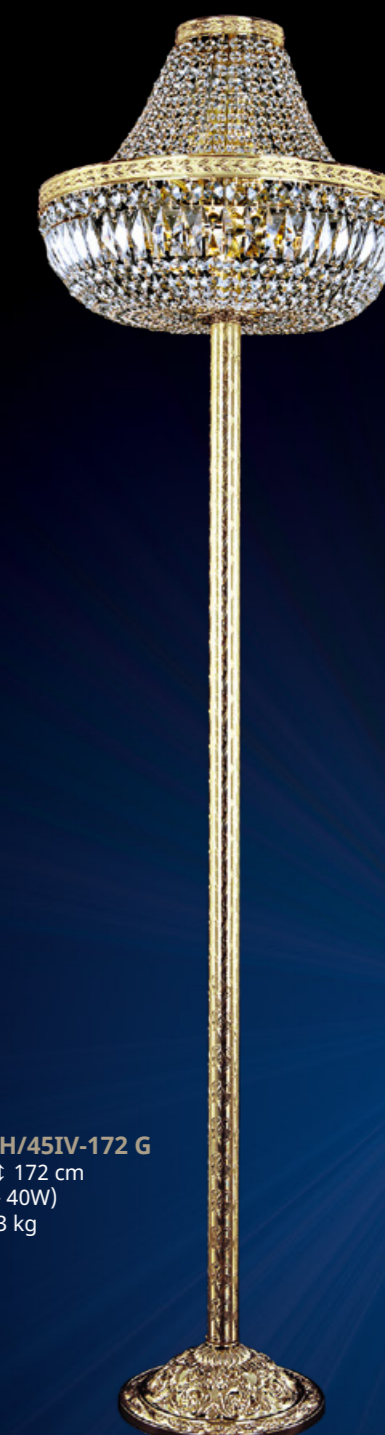
**19041T4/35IV-138 G**  
 ↔ 35 cm ↓ 138 cm  
 ♦ x 4 (E14 - 40W)  
 weight ≈ 14 kg



**19041T3/H/45IV-172 G**  
 ↔ 45 cm ↓ 172 cm  
 ♦ x 8 (E14 - 40W)  
 weight ≈ 15 kg



**19041T6/35IV-138 G**  
 ↔ 35 cm ↓ 138 cm  
 ♦ x 4 (E14 - 40W)  
 weight ≈ 11 kg



**19041T6/H/45IV-172 G**  
 ↔ 45 cm ↓ 172 cm  
 ♦ x 8 (E14 - 40W)  
 weight ≈ 13 kg





**77061/42 G**  
↔ 42 cm x † 36 cm  
◆ x 10 (E14 - 40W)



**77311/42 G**  
↔ 42 cm x † 24 cm  
◆ x 5 (E14 - 40W)



**77311/50 G**  
↔ 50 cm x † 24 cm  
◆ x 8 (E14 - 40W)





**77071/115 Ni**  
↔ 115 cm x ↓ 75 cm  
◆ x 19 (E14 - 40W)



**77071/59 Ni**  
↔ 59 cm x ↓ 45 cm  
◆ x 10 (E14 - 40W)



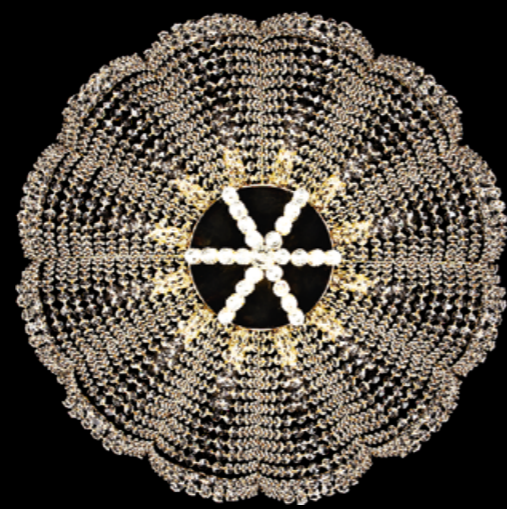
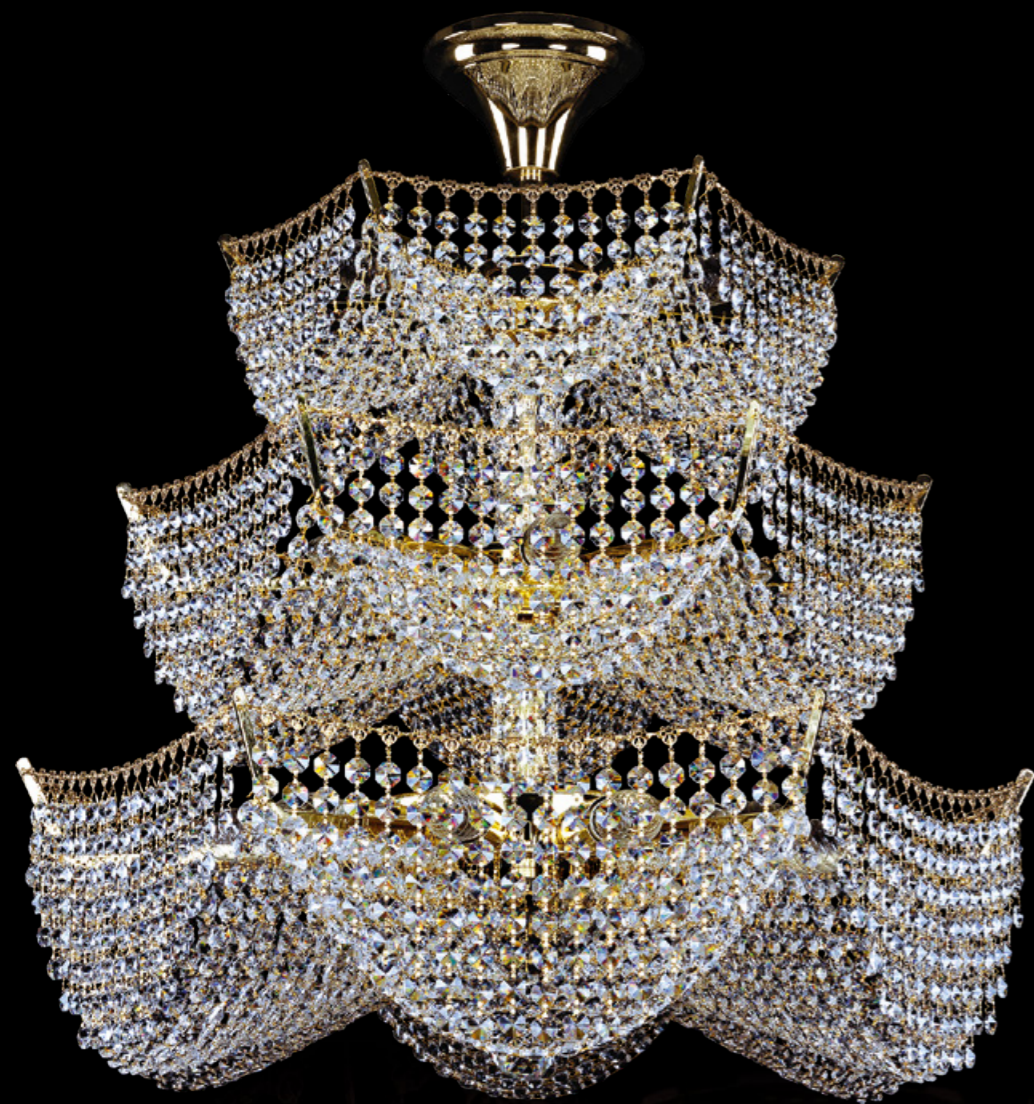
**77071/67 Pa**  
↔ 67 cm x ↓ 50 cm  
◆ x 13 (E14 - 40W)



**77071/95 Ni**  
↔ 95 cm x ↓ 72 cm  
◆ x 17 (E14 - 40W)

**77071/77**  
↔ 77 cm x ↓ 60 cm  
◆ x 15 (E14 - 40W)





**77081/65/3d G**  
↔ 65 cm x ↑ 72 cm  
◆ x 21 (E14 - 40W)  
weight ≈ 11kg

**77081/42 G**  
↔ 42 cm x ↑ 22 cm  
◆ x 3 (E14 - 40W)  
weight ≈ 2 kg



**77081/49**  
↔ 49 cm x ↑ 25 cm  
◆ x 6 (E14 - 40W)



**77081/58 G**  
↔ 58 cm x ↑ 25 cm  
◆ x 9 (E14 - 40W)  
weight ≈ 5 kg



**77081/67 Pa**  
↔ 67 cm x ↑ 30 cm  
◆ x 12 (E14 - 40W)  
weight ≈ 7 kg



**77081/115 G**  
↔ 115 cm x ↑ 40 cm  
◆ x 18 (E14 - 40W)  
weight ≈ 16 kg

**77081/76**  
↔ 76 cm x ↑ 35 cm  
◆ x 14 (E14 - 40W)

**77081/95**  
↔ 95 cm x ↑ 38 cm  
◆ x 16 (E14 - 40W)





**77081B/16 G**  
 ↔ 16 cm x 8 cm x ↑ 20 cm  
 ♦ x 1 (E14 - 40W)  
 weight ≈ 1 kg



**77071B/16 G**  
 ↔ 16 cm x 8 cm x ↑ 20 cm  
 ♦ x 1 (E14 - 40W)  
 weight ≈ 1 kg



**77081B/19 G**  
 ↔ 19 cm x 8 cm x ↑ 21 cm  
 ♦ x 2 (E14 - 40W)  
 weight ≈ 1 kg



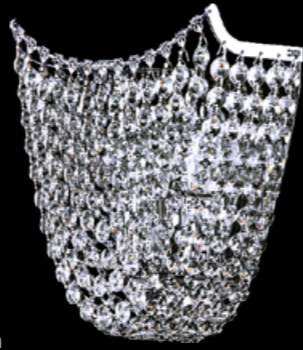
**77071B/19 G**  
 ↔ 19 cm x 8 cm x ↑ 21 cm  
 ♦ x 2 (E14 - 40W)  
 weight ≈ 1 kg



**77081B/22 G**  
 ↔ 22 cm x 8 cm x ↑ 22 cm  
 ♦ x 3 (E14 - 40W)  
 weight ≈ 1 kg



**77071B/22 Ni**  
 ↔ 22 cm x 8 cm x ↑ 22 cm  
 ♦ x 3 (E14 - 40W)  
 weight ≈ 1 kg



**77081B/34 Ni**  
 ↔ 34 cm x 11 cm x ↑ 30 cm  
 x 5 (E14 - 40W)  
 weight ≈ 1 kg



**77071B/34 Ni**  
 ↔ 34 cm x 11 cm x ↑ 30 cm  
 x 5 (E14 - 40W)  
 weight ≈ 1 kg



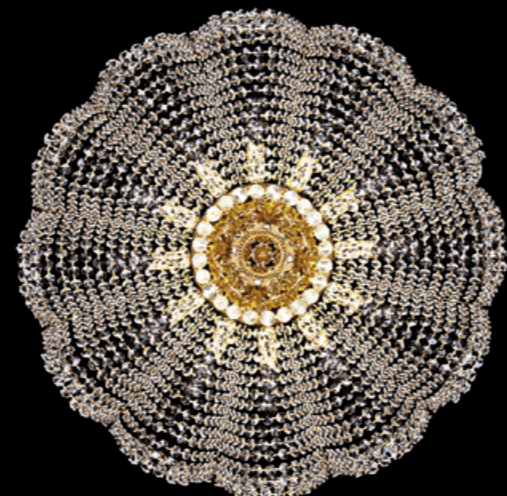
**77071B/xxxx**



**77081B/xxxx**







**77181/65/3d G**  
 ↔ 65 cm x ↑ 72 cm  
 ♦ x 21 (E14 - 40W)  
 weight ≈ 12kg

**77181/42 GW**  
 ↔ 42 cm x ↑ 22 cm  
 ♦ x 3 (E14 - 40W)  
 weight ≈ 3kg

**77181/49**  
 ↔ 49 cm x ↑ 25 cm  
 ♦ x 6 (E14 - 40W)



**77181/58 GB**  
 ↔ 58 cm x ↑ 25 cm  
 ♦ x 9 (E14 - 40W)  
 weight ≈ 5kg



**77181/67 Ni**  
 ↔ 67 cm x ↑ 30 cm  
 ♦ x 12 (E14 - 40W)  
 weight ≈ 7kg



**77181/115 NB**  
 ↔ 115 cm x ↑ 40 cm  
 ♦ x 18 (E14 - 40W)  
 weight ≈ 16kg

**77181/76**  
 ↔ 76 cm x ↑ 35 cm  
 ♦ x 14 (E14 - 40W)

**77181/95**  
 ↔ 95 cm x ↑ 38 cm  
 ♦ x 16 (E14 - 40W)



83111Т6/30IV-152 G  
↔ 30 cm ↑ 152cm  
♦ x 12 (E14 - 40W)  
weight ≈ 17 kg



83331Т6/40IV-152 G  
↔ 40 cm ↑ 152 cm  
♦ x 14 (E14 - 40W)  
weight ≈ 20 kg



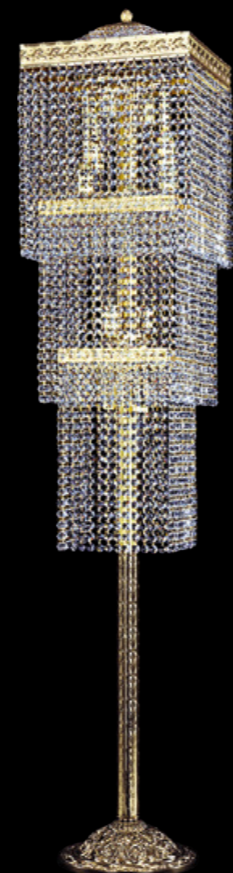
83311Т6/40IV-175 G  
↔ 40 cm ↑ 175 cm  
♦ x 18 (E14 - 40W)  
weight ≈ 27 kg



83112Т6/30IV-152 G  
↔ 30 cm ↑ 152 cm  
♦ x 9 (E14 - 40W)  
weight ≈ 17 kg



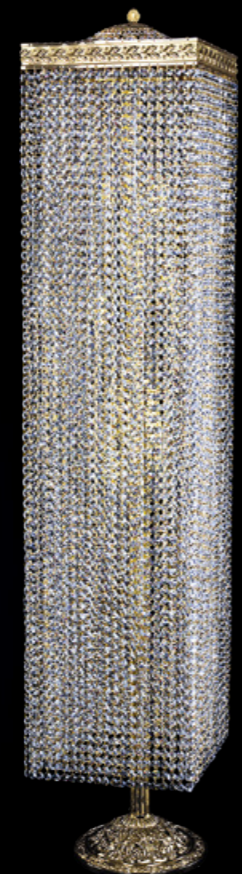
83322Т6/30IV-152 G  
↔ 30 cm ↑ 152 cm  
♦ x 12 (E14 - 40W)  
weight ≈ 19 kg



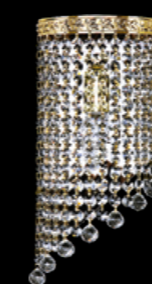
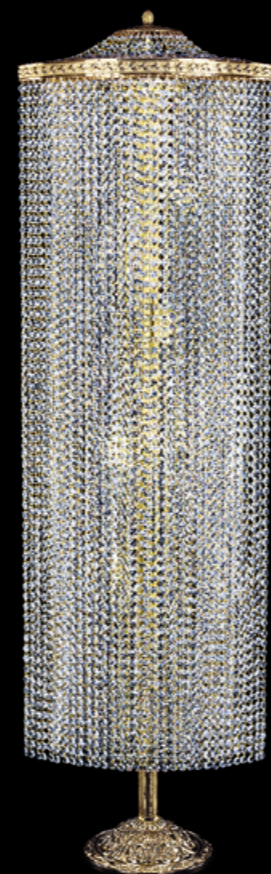
83411Т6/30IV-150 G  
↔ 30 cm ↑ 150 cm  
♦ x 18 (E14 - 40W)  
weight ≈ 21 kg



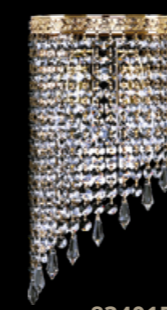
83412Т6/30IV-145 G  
↔ 30 cm ↑ 145 cm  
♦ x 10 (E14 - 40W)  
weight ≈ 24 kg



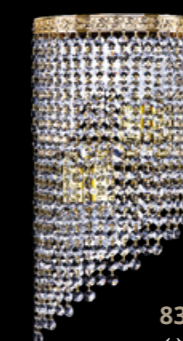
83413Т6/45IV-155 G  
↔ 45 cm ↑ 155 cm  
♦ x 8 (E14 - 40W)  
weight ≈ 20 kg



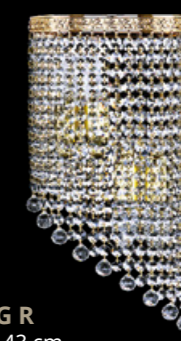
83401BL/15IV-33 G Balls  
↔ 15 cm x 8 cm x ↑ 33 cm  
♦ x 1 (E14 - 40W)  
weight ≈ 1 kg



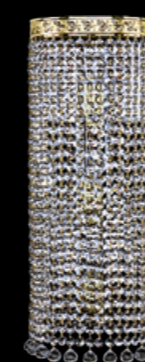
83401BL/18IV-34 G Drops  
↔ 18 cm x 8 cm x ↑ 34 cm  
♦ x 2 (E14 - 40W)  
weight ≈ 1 kg



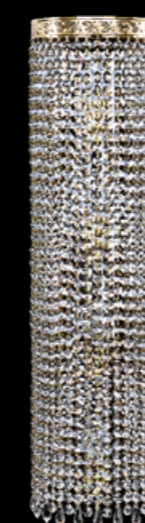
83401BL/20IV-43 G R  
↔ 20 cm x 10 cm x ↑ 43 cm  
♦ x 4 (E14 - 40W)  
weight ≈ 2 kg



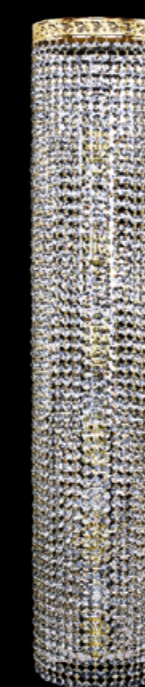
83401BR/20IV-43 Balls  
↔ 20 cm x 10 cm x ↑ 43 cm  
♦ x 4 (E14 - 40W)  
weight ≈ 2 kg



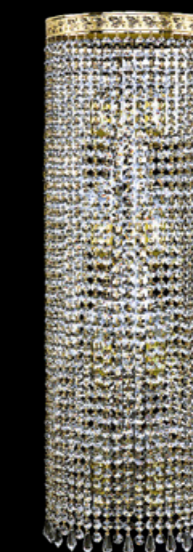
83401B/20IV-50 G Balls  
↔ 20 cm x 10 cm x ↑ 50 cm  
♦ x 3 (E14 - 40W)  
weight ≈ 4 kg



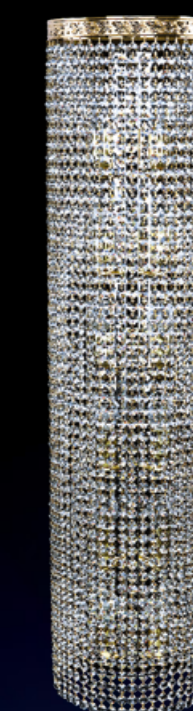
83401B/20IV-75 G Drops  
↔ 20 cm x 10 cm x ↑ 75 cm  
♦ x 6 (E14 - 40W)  
weight ≈ 4 kg



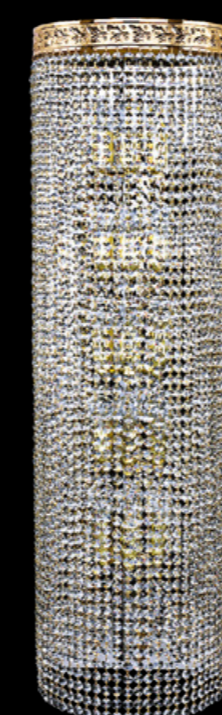
83401B/25IV-50 G Balls  
↔ 25 cm x 12 cm x ↑ 50 cm  
♦ x 6 (E14 - 40W)  
weight ≈ 4 kg



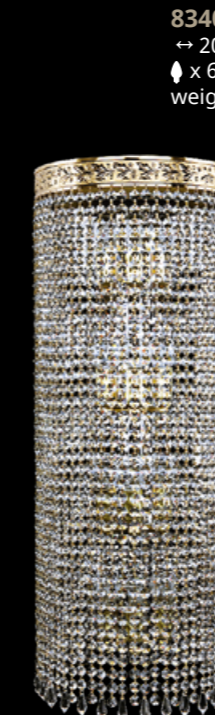
83401B/25IV-75 G Drops  
↔ 25 cm x 12 cm x ↑ 75 cm  
♦ x 8 (E14 - 40W)  
weight ≈ 4 kg



83401B/25IV-100 G R  
↔ 25 cm x 12 cm x ↑ 100 cm  
♦ x 12 (E14 - 40W)  
weight ≈ 5 kg



83401B/30IV-100 G R  
↔ 30 cm x 15 cm x ↑ 100 cm  
♦ x 15 (E14 - 40W)  
weight ≈ 8 kg



83401B/30IV-75 G Drops  
↔ 30 cm x 15 cm x ↑ 75 cm  
♦ x 12 (E14 - 40W)  
weight ≈ 6 kg



83401B/30IV-50 G Balls  
↔ 30 cm x 15 cm x ↑ 50 cm  
♦ x 9 (E14 - 40W)  
weight ≈ 6 kg



83401B/40IV-50 G R  
↔ 40 cm x 15 cm x ↑ 50 cm  
♦ x 9 (E14 - 40W)  
weight ≈ 6 kg



14771/15 G .....	12	19011/80IV G .....	45	19051/H2/80IV G .....	29	19101/H1/35IV Ni.....	77
14771/22 G .....	12	19011/100IV G.....	44	19051/H2/100IV G.....	28	19101/H1/55IV G .....	77
14771/25 G .....	12	19011/H1/60IV G .....	46	19051B/20IV G .....	30	19101/H1/80IV GB.....	77
14771/30 G .....	12	19011/H1/80IV G .....	46	19051B/25IV GB.....	30	19101/H1/100IV G.....	76
14771/35 G .....	12	19011/H2/55IV G .....	47	19051B/35IV NB.....	30	19101/H2/35IV Ni.....	79
14771L1/22 Ni .....	18	19011/H2/80IV G .....	47	19051B/H1/20IV G.....	30	19101/H2/55IV G .....	79
14771L2/22 G .....	18	19011B/25IV G.....	48	19051B/H1/25IV GB.....	30	19101/H2/80IV G .....	79
14771T1/35-145 G .....	19	19011B/H1/25IV G.....	48	19051B/H1/35IV NB.....	30	19101/H2/100IV G.....	78
14771T2/30-145 G .....	19	19011B/H2/35IV G.....	48	19051B/H2/20IV G .....	30	19101B/35IV GW.....	80
14781/15 G Balls.....	13	19011L4/25IV Ni.....	49	19051B/H2/25IV GB.....	30	19101B/H1/35IV G.....	80
14781/15 G Drops .....	13	19011L4/H/25IV Ni .....	49	19051B/H2/35IV NB.....	30	19101B/H2/35IV G.....	80
14781/15 G Leafs.....	13	19011L6/25IV Ni.....	49	19051L4/25IV Ni.....	31	19101T3/H/45IV-172 G.....	81
14781/15 G R .....	13	19011L6/H/20IV G .....	49	19051L4/H/20IV G .....	31	19101T4/35IV-138 G .....	81
14781/15 Ni .....	13	19011T4/35IV-138 G.....	49	19051L4/H/25IV Ni .....	31	19101T6/35IV-138 G.....	81
14781/22 G R.....	14	19011T6/H/45IV-172 G .....	49	19051L6/25IV Ni.....	31	19101T6/H/45IV-172 GB.....	81
14781/22 Ni.....	14	19031/35IV GW.....	91	19051L6/H/20IV Pa .....	31	19111/35IV Ni.....	35
14781/22 Ni Balls.....	14	19031/55IV Ni .....	91	19051T3/H/45IV-172 G.....	32	19111/55IV G.....	35
14781/22 Ni Drops .....	14	19031/80IV GB.....	91	19051T4/35IV-138 G.....	32	19111/80IV G .....	35
14781/22 Pa Leafs.....	14	19031/100IV G.....	90	19051T6/35IV-138 G.....	32	19111/100IV G.....	34
14781/25 G Drops .....	15	19041/35IV G.....	93	19051T6/H/45IV-172 G .....	32	19111/H1/35IV G.....	37
14781/25 G Leafs .....	15	19041/55IV GB.....	93	19091/35IV G .....	83	19111/H1/55IV G.....	37
14781/25 Ni Balls.....	15	19041/80IV G .....	93	19091/55IV G .....	83	19111/H1/80IV GB.....	37
14781/25 Ni R.....	15	19041/100IV G.....	92	19091/80IV G .....	83	19111/H1/100IV G.....	36
14781/25 Pa .....	15	19041B/25IV GW.....	94	19091/100IV G.....	82	19111/H2/35IV G.....	39
14781/30 G Balls.....	16	19041B/35IV Pa.....	94	19091/H1/35IV G.....	85	19111/H2/55IV G.....	39
14781/30 G Leafs .....	16	19041B/H1/25IV GW .....	94	19091/H1/55IV G .....	85	19111/H2/80IV G.....	39
14781/30 Ni Drops .....	16	19041B/H1/35IV Pa .....	94	19091/H1/80IV G .....	85	19111/H2/100IV G.....	38
14781/30 Ni R .....	16	19041B/H2/25IV GW .....	94	19091/H1/100IV G.....	84	19111B/25IV G.....	40
14781/30 Pa.....	16	19041B/H2/35IV Pa.....	94	19091/H2/35IV G .....	87	19111B/H1/25IV G.....	40
14781/35 G Drops .....	17	19041T3/H/45IV-172 G.....	95	19091/H2/55IV G .....	87	19111B/H2/35IV Ni .....	40
14781/35 G Leafs.....	17	19041T4/35IV-138 G .....	95	19091/H2/80IV G .....	87	19111L4/25IV Ni .....	41
14781/35 G R.....	17	19041T6/35IV-138 G.....	95	19091/H2/100IV G.....	86	19111L4/H/25IV Ni.....	41
14781/35 Ni.....	17	19041T6/H/45IV-172 G.....	95	19091B/35IV G.....	88	19111L6/25IV Ni.....	41
14781/35 Ni Balls.....	17	19051/35IV G .....	25	19091B/H1/35IV G.....	88	19111L6/H/20IV Ni .....	41
14781L1/22 G .....	18	19051/55IV G .....	25	19091B/H2/35IV G.....	88	19111T4/35IV-138 G .....	41
14781L1/22 G Balls.....	18	19051/80IV G .....	25	19091T3/H/45IV-172 G.....	89	19111T6/H/45IV-172 G.....	41
14781L1/22 G Leafs.....	18	19051/100IV G.....	24	19091T4/35IV-138 G.....	89	19151/35IV Ni.....	43
14781L2/22 G Balls.....	18	19051/H1/35IV G.....	27	19091T6/35IV-138 G.....	89	19151/55IV G .....	43
14781L2/22 G R .....	18	19051/H1/55IV G .....	27	19091T6/H/45IV-172 G .....	89	19151/80IV G .....	43
14781T1/30-145 G .....	19	19051/H1/80IV G .....	27	19101/35IV Ni.....	75	19151/100IV G.....	42
14781T2/35-145 G Drops.....	19	19051/H1/100IV G.....	26	19101/55IV G .....	75	19201/15IV Ni .....	20
19011/35IV G .....	45	19051/H2/35IV G .....	29	19101/80IV G .....	75	19201/15IV Ni Balls .....	20
19011/55IV G .....	45	19051/H2/55IV G .....	29	19101/100IV G.....	74	19201/15IV Ni Drops.....	20



19201/15IV Ni Leafs	20
19201/15IV Ni R	20
19201/20IV G	21
19201/20IV G Balls	21
19201/20IV G Drops	21
19201/20IV G Leafs	21
19201/20IV G R	21
19201/25IV G	22
19201/25IV G Balls	22
19201/25IV G Drops	22
19201/25IV G Leafs	22
19201/25IV G R	22
19201L4/25IV Ni Drops	23
19201L4/H/20IV Pa	23
19201L6/25IV Ni R	23
19201L6/H/20IV Pa Balls	23
19271/35IV GW	51
19271/55IV G	51
19271/80IV Ni	51
19271/100IV G	50
19271/H1/35IV GW	53
19271/H1/55IV Ni	53
19271/H1/80IV G	53
19271/H1/100IV GW	52
19271/H2/35IV G	55
19271/H2/55IV Ni	55
19271/H2/80IV Ni	55
19271/H2/100IV G	54
19271B/25IV G	56
19271B/H1/25IV G	56
19271B/H2/35IV G	56
19271L4/25IV Ni	57
19271L4/H/25IV Ni	57
19271L6/25IV Ni	57
19271L6/H/20IV G	57
19271T4/35IV-138 G	57
19271T6/H/45IV-172 G	57
19281/35IV GW	59
19281/60IV Ni	59
19281/80IV GB	59
19281/100IV G	58
19281/H1/35IV G	61
19281/H1/55IV G	61

19281/H1/80IV GB	61
19281/H1/100IV G	60
19281/H2/35IV G	63
19281/H2/55IV G	63
19281/H2/80IV GB	63
19281/H2/100IV G	62
19281B/25IV G	64
19281B/H1/25IV G	64
19281B/H2/35IV Ni	64
19281L4/25IV Ni	65
19281L4/H/25IV Ni	65
19281L6/25IV Ni	65
19281L6/H/20IV Ni	65
19281T4/35IV-138 G	65
19281T6/H/45IV-172	65
19321/35IV G	67
19321/55IV G	67
19321/80IV Ni	110
19321/100IV NB	66
19321/H1/35IV G	69
19321/H1/55IV Ni	69
19321/H1/80IV G	69
19321/H1/100IV GW	68
19321/H2/35IV Ni	71
19321/H2/55IV Ni	71
19321/H2/80IV Ni	71
19321/H2/100IV G	70
19321B/25IV GW	72
19321B/H1/25IV G	72
19321B/H2/35IV G	72
77061/42 G	96
77071/59 Ni	99
77071/67 Pa	99
77071/95 Ni	99
77071/115 Ni	98
77071B/16 G	102
77071B/19 G	102
77071B/22 Ni	102
77071B/34 Ni	102
77081/42 G	101
77081/58 G	101
77081/65/3d G	100
77081/67 Pa	101

77081/115 G	101
77081B/16 G	102
77081B/19 G	102
77081B/22 G	102
77081B/34 Ni	102
77181/42 GW	105
77181/58 GB	105
77181/65/3d G	104
77181/67 Ni	105
77181/115 NB	105
77311/42 G	97
77311/50 G	97
83111T6/30IV-152 G	106
83112T6/30IV-152 G	106
83311T6/40IV-175 G	106
83322T6/30IV-152 G	106
83331T6/40IV-152 G	106
83401B/20IV-50 G Balls	107
83401B/20IV-75 G Drops	107
83401B/20IV-100 G R	107
83401B/25IV-50 G Balls	107
83401B/25IV-75 G Drops	107
83401B/25IV-100 G R	107
83401B/30IV-50 G Balls	107
83401B/30IV-75 G Drops	107
83401B/30IV-100 G R	107
83401B/40IV-50 G R	107
83401BL/15IV-33 G Balls	107
83401BL/18IV-34 G Drops	107
83401BL/20IV-43 G R	107
83401BR/20IV-43 Balls	107
83411T6/30IV-150 G	106
83412T6/30IV-145 G	106
83413T6/45IV-155 G	106





Доработки технических параметров светильника со стороны изготовителя, ошибки и опечатки в данном каталоге не могут являться причиной возникновения претензий со стороны покупателя.

Полная версия каталога на сайте [www.BohemiaIveleCrysral.com](http://www.BohemiaIveleCrysral.com)